

# Northwest Collage Society

Affiliate of The National Collage Society

Volume 23 • Issue 2

[www.nwcollagesociety.org](http://www.nwcollagesociety.org)

November 2011

## PRESIDENT'S MESSAGE

What is your artistic goal? After writing out that question, I realized, I haven't thought about my goal for a long, long time. Twelve months ago, I went through a major surgery and I'm just now feeling up to par. Thus, it's become easier to move ahead to where I want to concentrate my art energy. This past year, I have been just reacting, not directing what I want to do.

The first thing to do is decide how much time I want to devote to creating work in my studio or teaching, etc. After I understand how to structure my creative time and how much output (completed work) I'm looking at, then what? The bottom line is that I think I need to structure my time and energy.

Now – we get down to my real problem. I don't like structure! And in this case structure and discipline are what I need. It looks like my real Artist Goal is “to work on my discipline.” From what I've read in the Professional Artist, a good way to start and keep you motivated is to begin each day doing the same thing. What you do needs to take no more than 5 to 10 minutes a day. The activity could be doing yoga, stretching, reading, and singing, or do like my husband who makes a double latte. Since I can't hit the snooze button on the alarm for my activity, I need to become a morning person with a “disciplined attitude”.

From the article, I learned without an early morning routine and exercise routine our creative juices just don't loosen up and help us meet our goals. For years, I have been fighting what I need most in my life; perhaps I will now listen and begin to help myself develop into the creative person I want to be.

~ Suzy

### *NWCS Spring Juried Exhibit at the Rob Schouten Gallery*

**January 18, 2012 is the Deadline** for entry to our Spring Show. We are thrilled to visit this venue, located in Greenbank on Whidbey Island, WA. Visit [www.robschoutengallery.com](http://www.robschoutengallery.com) for a look at their gallery. See attached Prospectus for more information.

## GENERAL MEETING

**Saturday, Nov. 12, 2011 - 10:30 a.m.**

**SHORELINE CENTER**, 18560 1st Ave. NE, Shoreline

## REFRESHMENTS

Evelyn C. Sheffer, Tonnie Wolfe, Dorothy Mayhew

## COLLAGE DRAWING

**November Donor:** Faye Hayes

## NOVEMBER PROGRAM

### David Owen Hastings

David recently completed a second artist residency at Centrum in Port Townsend, where he spent a week working on his art. “The residency provides a great workspace, comfortable living quarters, and the luxury of time to be creative. I documented my art-making process, which is a hybrid of painting, photography, printmaking and collage.” David will walk through the steps he takes to create his artwork: from taking original photographs and using them as inspiration and texture, to making monotype prints, and then collaging his materials together, including machine stitching them.

A show of this work will be at the Fraker/Scott Gallery in January. [www.frakerscottgallery.com](http://www.frakerscottgallery.com)  
[www.davidowenhastings.com](http://www.davidowenhastings.com)





## MEETING HIGHLIGHTS

### GENERAL MEETING

September 20, 2011

**Suzy Kueckelhan, President:**

Welcomed 46+ members and guests.

**■ Are you represented on our website?**

Please send your digital image to the editor. Your art will be presented on our website under Members Art with your name, title and email or website.

**Donna Jean Perry, Shows:** Our **Fall Show is at Parklane Gallery in Kirkland.** The show opens October 3 with **Opening Reception** on Friday, October 14, 6-8 pm, ArtWalk night.

Our **Spring Show** will be at **Rob Schouten Gallery**, Greenbank WA, on Whidbey Island. March 2 - April 4, 2012. **Opening Reception** is Friday, March 2, 5-8 pm. [www.robschoutengallery.com](http://www.robschoutengallery.com). Prospectus attached.

**The National Collage Society Postcard Show for 2012** will be held at the Bellevue Art Museum in the Spring of 2012 .

Our **Fall 2012 Show** will be at the Art Institute of Seattle, Burnley Gallery.

**Volunteers:** The NWCS can always use volunteers. We need people to help with hanging shows, receptions, newsletter, website and more. Please contact Suzy Kueckelhan at [suzyku@msn.com](mailto:suzyku@msn.com) or 206-842-3395 for more information.

### NORTHWEST COLLAGE SOCIETY

Information for the NWCS Newsletter may be submitted to the editor. Deadline for submissions are the dates of board meetings. (See backcover.)

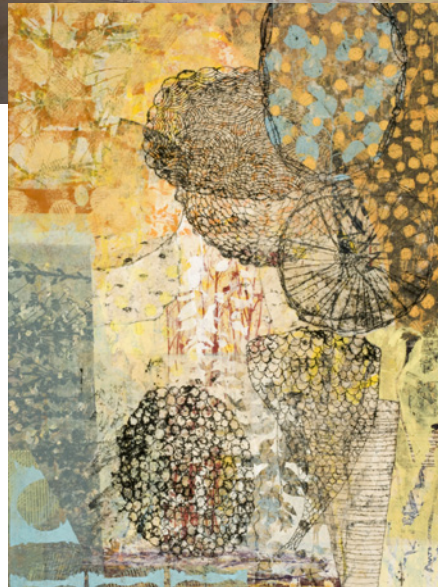
**Newsletter Editor:**

Gina Hanzsek, 206-940-0544  
[info@nwcollagesociety.org](mailto:info@nwcollagesociety.org)

Mail: 9326 44th PI SE  
Snohomish, WA 98290-9213

[www.nwcollagesociety.org](http://www.nwcollagesociety.org)

## SEPTEMBER PRESENTATION



### Eva Isaksen

*“Nature is stunning”*

“I’ve always been strongly influenced by nature, plants, landscape and water,” says Eva as she shows us some slides from her native Norway. There isn’t any wonder why it has seeped into the core of her artform. Eva uses paper. Thousands of sheets a year, of really thin paper, which she orders from Nepal. She prints on these papers using pressed plants and other organic material, often from her garden. “Garden fragments.” Each sheet is unique. Using acrylic gloss medium Eva adheres layer upon layer of cut papers onto the canvas, unfolding the unexpected, to achieve her finished piece. But you might say her papers alone are her art. They are exquisite in themselves even before being used in her collages. In January she will have an installation of her papers at Foster White Gallery. Be sure to visit the gallery and see her creation. [www.evaisaksen.com](http://www.evaisaksen.com)

SHOWS SHOWS SHOWS SHOWS SHOWS SHOWS SHOWS SHOWS SHOWS SHOWS SHOWS SHOWS SHOWS

## *Parklane Gallery Fall Show – October 2011*

We had a wonderful reception at the Parklane Gallery in Kirkland on October 14th for our Fall Show. Susanne Werner, the juror for the show awards, talked about what she looked for in jurying and why she chose the winners. Two collages have already been sold. Thanks everyone for your participation and congratulations to the award winners!

PEGGY TUTTLE MEMORIAL AWARD:

**Donna Jean Perry** for *Violin with One Blue Note*

ELEANOR WOLTERS SMITH MEMORIAL AWARD:

**Suzan Fant** for *12 Bar Progression #10*

NW COLLAGE SOCIETY AWARD:

**Gail Larson** for *Love Poem*

MERIT AWARD:

**Judith Heim** for *Imaginary Friend 2*

MERIT AWARD:

**Chris Romine** for *Protection*

MERIT AWARD:

**Roxsane Tiernan** for *Song for the Mountains*

MERIT AWARD:

**Esperanza Grundy** for *Lost Literature*



View more photos at [www.nwcollagesociety.org/Parklane2011.htm](http://www.nwcollagesociety.org/Parklane2011.htm)



## DESIGN NOTES

Contributed by Gail Larson

### Elements of Design

Value	Line
Shape	Size
Movement	Color
Texture	

These are the tools for the framework of your composition. The elements you select define your artistic style.

### Principles of Design

Balance	Harmony
Contrast	Repetition
Dominance	Rhythm
Gradation	

These principles are what you apply to organize your collage into a unified composition.

### Does your collage have:

- Four values - light, dark, two midtones
- Color dominance or warm or cool
- Interlocking shapes
- Constant mood
- Directional movement
- Variety of color, shape-size-edges.

## NOW FOR SALE!

**The 2012 National Collage Society calendar**, the centenary celebration of collage! The calendar features 12 months of collages created by members of the NCS. The calendar is 5.5 x 8.5 and is printed on premium heavy weight gloss paper using hi-definition archival ink. After the month has past, each calendar page can then be cut and used as a postcard or framed as a small print. All proceeds benefit the NCS, Inc. a non-profit art education foundation. Price: \$16 + shipping. To learn more and to purchase the 2012 NCS calendar visit: <http://nationalcollage.com/bookstore/calendar.html>

## MEMBER NEWS

**Gay Jensen** will be exhibiting her fabric collages and other textile artworks at the Best of the Northwest Show, Nov. 18-20 (Friday-Saturday hours from 10-6, Sunday from 10-5) at Smith Cove Cruise Terminal at Pier 91 in Seattle. [www.nwartalliance.com](http://www.nwartalliance.com).

**Marcia Douglas** has four works in the Eastside Association of Fine Arts Exhibit 4 at Seattle Design Center, 5701 Sixth Avenue S., Plaza Building, Suite P292. Mon-Fri, 11 a.m. - 3 p.m., now thru Nov. 4, 2011

The following people have collages in the **National Collage Society's 27th Annual Juried exhibit**.

Those marked with an asterix were granted signature membership in the National Collage Society this year: Gina Hanzsek, Colette Laico\*, Gail Larson, Dorothy Mayhew, Nancy Meldahl, Susan K. Miller, Keith Pace\*



Stairway to Paradise by Marcia Douglas

**Pat Snyder** was accepted into the 2011 Western Oregon Regional to be held at Coos Art Museum from Oct.14 to Dec. 3. The Regional was open to artists from the 18 counties of Western Oregon and juried by Scott Berger.

**Roxsane Tiernan** had a piece called *The Tree* accepted into the Autumn Salon at the Federation of Canadian Artists Gallery.

**Tis Huberth** got an Honorable Mention in watermedia at the Western Washington Fair in Sept. She also won the Jurors Award at the Federal Way Arts Alive show, and will have a one person show at the Federal Way City Hall in January.

**Peggy Champin** had 4 works accepted into the recent Kenmore Arts Annual Exhibition, with two Honorable mentions and one piece sold.

**Suzan Fant** had a piece from her new series: 12-Bar Progression selected to be shown at The Salem Arts Assoc./Camas Gallery/Salem OR Member's Group Show, Oct. 7 - Dec. 23. Additional work was selected for the SAA Sales/Rental Gallery.



12-Bar Progression #11 by Suzan Fant

**Joann Ossewarde, Carol Merrick and Barbara Stockwell**

will participate in LaConner's annual "Art's Alive" art show at Maple Hall in LaConner Nov. 4-6. They also have paintings on display at the LaConner Historical Museum through Dec. 31.

**Cam Elder** was fortunate to have the high selling painting at Art by the Foot during the Lake Chelan Arts Festival. She received a lot of compliments.

**Cam** is on the committee for Outdoor Public Art in Lake Chelan. If anyone knows of a sculptor that would be interested in having their work shown in beautiful Lake Chelan she would appreciate a phone number so she can contact them.

**Keith Pace** has an exhibit at Balefire (a purveyor of fine wines and spirits) on Hewitt in Everett.

**Susan Lehman** of Bandon, OR and **Pat Snyder** of Coos Bay, OR both have work accepted into "Symbols, Letters, Words-----Text Us!" Exhibition at the Umpqua Valley Arts Center in Roseburg, OR. Nov. 4, 2011 through Jan. 6, 2012.

**Dorothy Mayhew** has a collage in the "In the Red" juried art exhibit at Lynnwood Library.



## MEMBER NEWS

**Donna Jean Perry and Meg Gray** were accepted into the Miniature Masterpieces & More show at Kaewyn Gallery in Bothell, Dec. 4 - Jan. 25, 2012. [www.frameworkrightbothell.com](http://www.frameworkrightbothell.com)

### NWCS Spring Juried Exhibit at the Rob Schouten Gallery

Hey all collagists, now is the time to get your motors running! Start creating your fabulous collages for our upcoming celebratory year of collage. 2012 is the centenary year of collage as a fine art. Let's kick it off with a fabulous show at the Rob Schouten Gallery. **Send us your entries by January 18th.** We hope to have a large presence at this show and garner interest for the upcoming National Collage Society's "Wish you Were Here" postcard show held at the Bellevue Art Museum in April. Our Fall Show will be held at the Art Institute of Seattle Burnley Gallery. What a great year we have ahead of us!

## Northwest Collage Society RETREAT 2012

This is our first but hopefully an annual event. We will be holding a working retreat at **Camp Warm Beach** ([www.warmbeach.com](http://www.warmbeach.com)) **February 24 - 26, 2012.** The camp is located north of Seattle off of I-5 outside of Stanwood, WA. This is an opportunity for the members to get to know each other better and work on their art for 2 days with meals provided by the retreat center. Both single and double rooms are available. We will have a meeting room with tables to work on. View the photos on the website of both the meeting rooms and the bedrooms. The cost is \$159 for a double room and \$228 for a single room which includes 6 meals - Friday dinner through Sunday lunch. Please contact **Candice Christie at [cmchristie45@gmail.com](mailto:cmchristie45@gmail.com)** if interested in attending. Indicate whether you prefer a single or double room. Currently there are 18 members signed up! The membership is showing a lot of interest. This should be a fun time for all!



**A BIG THANK YOU** to Meg Gray who has stepped up to be our treasurer. We will miss Carol Eichler's insight and quick wit at our board meetings. Thanks to both of you for your time and effort. And thanks to all of you who play your part in keeping the Collage Society active, pertinent and inspiring.

## ANNOUNCEMENTS

### Welcome New Members

Teresa Ettel, Seattle  
Colleen Faye Bollen, Shoreline  
Faye Hayes, Bellingham  
Betty Oldham, Seattle

### February 2012 Program

**February 21, Tuesday: Artists in Action Workshop.** Four NWCS members will present their working style and insight into collage.

### April 2012 Program

**April 17, Tuesday:  
Susan Lehman**  
[www.susanlehmanartist.com](http://www.susanlehmanartist.com)

### Where do your dues go?

Northwest Collage Society yearly dues provide you with inspiring programs every other month. Two juried shows a year. A member newsletter and website. The overhead expenses include facility rentals, program honorariums, juror fees, publicity costs and show expenses.

### Collage 101 Workshop

Okay, so perhaps you don't need a "Collage 101 class", but you may know someone who does.

**Wendy Lee Lynds** is teaching this class up at the Pacific NW Art School in Coupeville, WA on Whidbey Island, November 12 - 13, 2011. In this fun and fast-paced workshop you will come away with the confidence to create your own masterpieces! For more info visit [www.pacificnorthwestartschool.org](http://www.pacificnorthwestartschool.org).

*The true painter must be able,  
with the most usual things  
to have the most unusual ideas.*

~ Salvador Dalí,  
*50 Secrets of Magic Craftsmanship*



### NATIONAL COLLAGE SOCIETY

#### Northwest Collage Society

Affiliate of the National Collage Society.  
NWCS was established in 1984 as a non-profit organization to advance the stature of collage as a major art medium.

*Collage: An artistic composition made of various materials (as paper, cloth, or wood) glued on a surface.*

#### CORPORATE HEADQUARTERS

President Gretchen Bierbaum, N.C.S. Inc.  
254 West Streetsboro St. Hudson, OH 44236  
www.nationalcollage.com

### 2011-2012 NORTHWEST COLLAGE SOCIETY OFFICERS

Regional Rep	GAIL LARSON	360/765-3332	
President	SUZY KUECKELHAN	206/842-3395	suzyku@msn.com
Treasurer	MEG GRAY	206/372-1754	meg@meggray.com
Secretary	WENDY LEE LYNDS	360/341-1035	wendyleelynds@whidbey.com
Membership	SANDRA JUDD	206/293-2676	gatorlovesrocks@gmail.com
Shows	DONNA JEAN PERRY	425/454-4726	donnajeanperry@gmail.com
Programs	MEG GRAY	206/372-1754	meg@meggray.com
Newsletter Editor	GINA HANZSEK	206/940-0544	ginahanzsek@comcast.net
Member-at-Large	EDNA RIDEOUT	425/869-6573	
Member-at-Large	KATHY PARKER	206/283-7939	kparkerncs@earthlink.net

### MEETINGS 2011 – 2012

**NOVEMBER 12 10:30 a.m. General**  
**2012**

January 17 – Board

**FEBRUARY 21 10:30 a.m. General**

March 20 – Board

**APRIL 17 10:30 a.m. General**

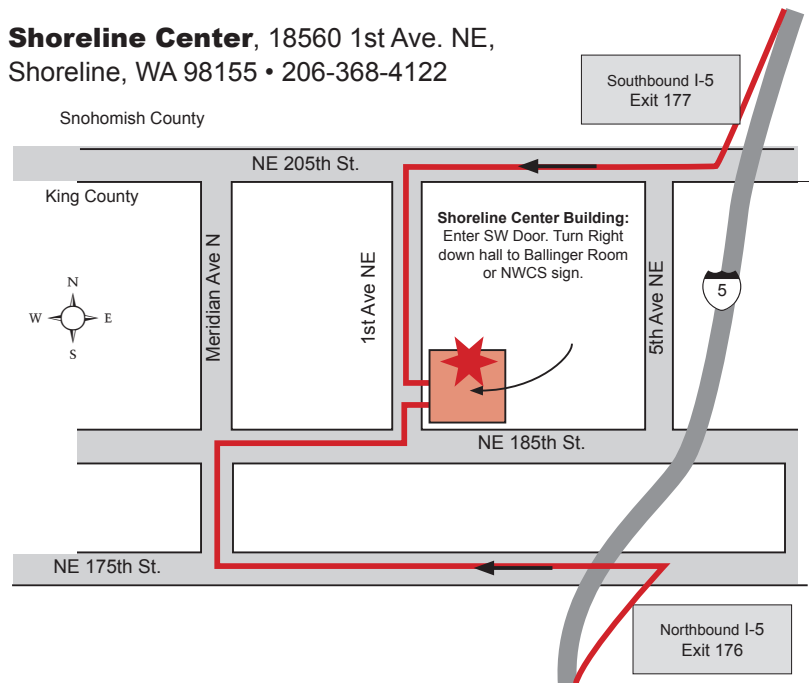
May 22 – Board

**JUNE 19 10:30 a.m. General**

*“The creation of something new is not accomplished by the intellect but by the play instinct acting from inner necessity. The creative mind plays with the objects it loves.”*

~Carl Jung

**Shoreline Center**, 18560 1st Ave. NE,  
Shoreline, WA 98155 • 206-368-4122



## Northwest Collage Society

If you need further information about the Northwest Collage Society you may contact: Suzy Kueckelhan, NCS, 206-842-3395, suzyku@msn.com or visit our website at www.nwcollagesociety.org

Please type or print your name as you wish it to appear in the Membership Directory.

Make checks payable to NWCS. Membership dues are collected each September.

Associate Members \$40.00  
(Feb. 1 – June 30. New Members Only, \$20)

**Mail to:** Meg Gray, NWCS Treasurer  
6104 Latona Ave NE  
Seattle, WA 98115

### APPLICATION FOR MEMBERSHIP

Name: \_\_\_\_\_

Address: \_\_\_\_\_

City: \_\_\_\_\_ State: \_\_\_\_\_ Zip: \_\_\_\_\_

Phone: (\_\_\_\_\_) \_\_\_\_\_ Website: \_\_\_\_\_

Email: \_\_\_\_\_

Newsletter is sent as a PDF via email