



# Northwest Collage Society

Affiliate of the National Collage Society

Established in 1984 to enhance the stature of collage as a major art medium

## GENERAL MEETING

### SHORELINE CENTER

#### Mt Rainier Room

Tuesday,

September 20, 2016

10:00 AM: Meet & Greet

10:30 AM: Meeting

#### REFRESHMENTS

Susan Lindsay

Kathy Parker

Michelle Unger

Coffee, Janet Atlas

#### COLLAGE DRAWING

June donor:

Anne La Fever

## NWCS Winter Show

January 2017

Juror: TBA

Cascadia Art Museum

190 Sunset Ave E

Edmonds, WA

[cascadiaartmuseum.org](http://cascadiaartmuseum.org)

Prospectus will be available by

September 20th meeting.

Show will be themed to join

with a specific curated

museum installation.

## Refreshments Volunteers

**Gail Larson** is recruiting volunteers to bring the snacks/treats for the 2016-17 general meetings.

PLEASE SIGN UP!

Contact Gail: [glarson456@gmail.com](mailto:glarson456@gmail.com)

## President's Message

WELCOME back from summer! I hope you have had time to create with joy!

Have you ever had a time when you look at one of your collages and think 'Why did I do that?' Working in my studio recently, I was rummaging through a few pieces that had been in shows. I found one piece I am very fond of (it had received awards in a number of shows.) I excitedly brought the collage from my studio into my front room. I was very happy to have it hang on the wall. Much to my surprise, the collage just didn't hold together like it had in the shows. I started to fuss around with the piece trying to figure out what was wrong.

My first problem is the wall I hung it on was pale off white with a little tan. The piece surprised me by looking very washed out against the wall color. The dominant color of the bottom two thirds of the piece is a very light tan.

My second problem is I found that the bottom third of the collage doesn't have any action or movement. It became just a big area of nothing against the wall.

I just can't figure out yet what I should do, since my core problem relates to the washed out color on the lower part of my piece. The piece is unframed, and I'm thinking about framing it by attaching a 2 inch piece of thin flat wood on the back. Then I could paint it black and hope for the best. I hope to work on it soon, and bring it the next time we meet.

—Suzy

## CancerLifeline

### Read Between the Lines:

A Collaboration Between the Northwest Collage Society and Cancer Lifeline  
**October 27 – December 6, 2016**

Members of the Northwest Collage Society will present their artwork in response to poetry written by participants in Cancer Lifeline's writing groups. Participating artists will email John Arbuckle with title, size and price of artwork: [johnner55@yahoo.com](mailto:johnner55@yahoo.com). All pieces must be delivered to the Dorothy O'Brien Center at 6522 Fremont Ave N, Seattle, WA, on October 20th, 1:30 - 4:00 PM. Opening reception: Evening of October 27th, time TBA.

September 2016 Program – Larry Calkins

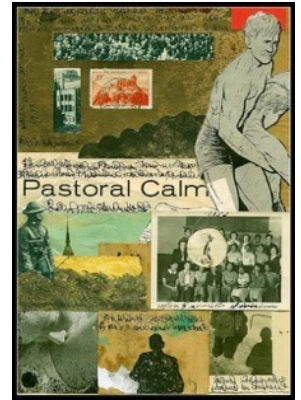
Artist Statement

My ancestors crossed the plains and homesteaded in the Harlan Valley in Oregon, where I grew up. People in the valley depended on each other and formed a tight knit community. They raised cattle, sheep, farmed and logged trees for a living. Looking back to my childhood in the late fifties, life in the valley still seemed like that of pioneer times when a man could hack out a little clearing—as my father did—and with his own hands build a small shelter to raise a family. They survived with a few essentials. Houses were small and the work was honest. People didn't plan to be rich, they they just wanted to survive and be happy.



Both parents never felt stifled by the isolation of a remote valley. My dad was very practical and my mother loved books and music. Their door was always open to young and old, to newcomers, and to the long-time residents of this ever changing community. We find that change IS inevitable when logging and farming provides a living.

My artwork is suffused with the world they opened up for me, condensed in a pictorial narrative, sometimes secretive, or humorous, or biting, sometimes dipping into the absurd and surreal undercurrent of a community steeped in personal tragedy—but also in the ever present hilarity of the unbroken human spirit. I've always used collage in one form or another in my work. I think collage is the perfect art form for the 21st century. In this age of image glut, collage is the ideal way to process and make sense of it.



(Text and images, ©Larry Calkins)

June Program Notes — Wendy Lee Lynds

Program coordinator Wendy Lee Lynds led the June program: a group exercise in creating a postcard-sized collage following a series of timed prompts. Everyone received a piece of cereal box cardboard, and the group followed a series of prompts to create their postcard.

Here are some of the prompts. Write how your week has gone with any marking instrument. Cover 1/3 of your card with one piece of paper. Add one small image. Add just one word of text. Pass 2 pieces of collage paper & your card to the right. Retrieve your own card, keeping what you like and collage the rest. Using text from a book page. Make a "found poem" with your text in a quiet space on your card. Collages were shared at the end of the program.

*You are never too old to set another goal or dream a new dream.*

—C. S. Lewis

\$\$\$ Membership Renewal \$\$\$

NWCS Annual Membership fees are always due in September. You may renew your 2016–17 membership (\$40.00) at the September 20th meeting, or you can send a check to Meg Gray (application and mail address on page 7 of this newsletter). You may also use the PayPal method, available under contacts on the NWCS website: [LINK](#)



Thank you!

—Meg Gray, Treasurer



June General Meeting Notes  
—by Carole Carroll

Suzy Kueckelhan opened the meeting at 10:30 AM. Anne LaFever introduced new member, Colleen Monette. Meg Gray gave the treasurer’s report. John Arbuckle reported on the entries for the upcoming summer juried show at the Phinney Art Center. A total of 52 works from 30 artists were selected. Delivery and pickup to be at the Phinney Center. John also announced that Susan Miller will assist as show coordinator starting with the summer 2017 show. Jan Clem announced a request from Cancer Lifeline to take part in a show in which poems written by CLL members are interpreted into collage artworks. Teresa Ettel shared her experience and her artworks from a previous CLL/NWCS show. The show, Oct 28–Dec 9, will be an exhibit only, with no jury or prizes. CLL will host the opening reception, Oct 27, at the Dorothy O’Brien Center in Seattle. Wendy Lee Lynds announced that we will have Robert Stockton and Barbara DePirro as future program presenters. Anne La Fever won the collage exchange by Jan Clem. Anne will bring the September collage. Wendy Lee Lynds led the postcard collage program.

Heads Up — November Challenge

MEMBERS’ CHOICE CHALLENGE  
\$25.00 CASH AWARD

Saturday, November 19, 2016

MY DEEP SECRET

How Deep Is It? Can Art Speak Out Loud?

Parameters: 4” x 6” collage

Mounted on 8”x10” white 4-ply mat board,  
unsigned on front, signed on back of mat board.

Attention given to:

Overall good design

Cohesiveness

Imagery

Correlation of lights and darks

Focus

Keep an open mind!

Challenge yourself to create a small artwork!

Bring your Challenge Collage to the

November 19 General Meeting.

—Meg Gray

New Members

Colleen Monette, Seattle  
Jenny Fillius, Seattle

32nd NCS Annual Juried Exhibit



Downtown Gallery,  
Kent State University, Kent, OH  
September 29–October 29, 2016  
[WEBSITE](#)

Calls for Art

**Edward Hopper House Art Center**, Nyack, NY. Annual *Small Matters of Great Importance: Paper Art*, juried exhibit. All work submitted must use paper as a primary medium, including artist books, collage, origami, paper sculpture. Deadline: Sept 23. [edwardhopperhouse.org](http://edwardhopperhouse.org)

**Lynnwood City Hall Art Exhibits**, juried by Lynnwood Arts Commission. Deadline Sept 30. [ArtGallery\\_Application.pdf](#)

**Dendroica Gallery**, Capitol Hill, Seattle. Call for art representing the theme, *Ornithology*. Art related to birds, representative or abstract. Deadline: Oct 15. [LINK](#)

**Vashon Center for the Arts**, Vashon Island / Koch Gallery Call for Northwest Artists, for monthly exhibits in 2017. Deadline: Oct 15. [LINK](#)

**Artist Trust 2017 Benefit Art Auction**. Visual and jewelry artists may submit up to 3 works to be considered for inclusion in the auction. Deadline: Oct 17. [artisttrust.org](http://artisttrust.org)



News from [artnet.com](http://artnet.com), June, 2016:

The world’s newest shade of blue, a brilliantly bright pigment called **YInMn Blue**, has been licensed for commercial use and is already in the hands of artists.

...The pigment was discovered in 2009 by chemist [Mas Subramanian](#) and his team at Oregon State University while they were conducting experiments connected to electronics.... (The name comes from the pigment’s elemental makeup, which includes Yttrium, Indium and Manganese.)... Existing blue pigments include ultramarine made from ground lapis lazuli, and toxic alternatives such as Cobalt blue and Prussian blue, making [OSU's](#) discovery a major breakthrough, and the first new blue in over 200 years. Check out the links for details.

—Liz Simpson

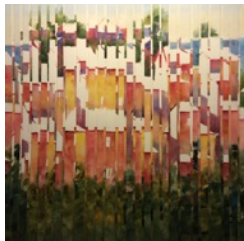
**Member News**



Elizabeth Halfacre



Donna Jean Perry



Kathy Collins

**Roxsane Tiernan** is one of the selected artists for the show "Seven Solidudes", Oct 2–22 at the Waterfall Gallery, Vancouver, BC. She is also part of the Burnaby Artists Guild Show Oct 28–30. Her work *Coquitlam River Morn* will be featured in the article "Art in Canada" in the October edition of *Southwest Art* magazine.

**Elizabeth Halfacre's** collage, *Clan Objects* was selected for "Expressions Northwest," in the Annual Art Port Townsend Juried Exhibit at Northwind Arts Center, Aug 4–28.

**Susan K Miller** has an artwork, *Troubled Water*, in "H2O, the 11th Annual Juried Show" at Columbia City Gallery, Aug 17–Sept 25. She was also selected for the "Expressions Northwest" Exhibit in Port Townsend.

**Donna Jean Perry** won a Juror's Award at the Renton Annual Art Show, two Honorable Mention Awards at Schack Art Center's 19th Juried Show, and Honorable Mention at the Kenmore Art Show. She also had collages in Tsuga Gallery's Invitational Americana Show, in Shoreline Arts Festival, and in the Edmonds Arts Festival.

**Anne La Fever** will have a one woman exhibit, *Arts and Sciences*, at the Ghost Gallery, on Denny Way, Capitol Hill in Seattle, for the month of October. [www.ghostgalleryshop.com](http://www.ghostgalleryshop.com)

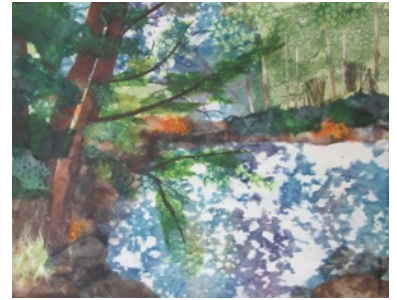
**Maggi Mason** has been selected as an Invitational Artist to show her collages at Arts Alive in LaConner, at Maple Hall, Nov 4 –6.

**Kathy Collins'** mixed media collage *Mythical* was accepted into the "Rocky Mountain National Watermedia Exhibition", Golden, CO, Sept 16–Oct 23.

**Katherine Dickerson** was accepted into the "Mighty Tieton 10x10x10" exhibit, Tieton, WA, Aug 13–Oct 9.

**Becky Birinyi, Carole Carroll, Carolyn Cavalier, Ken**

**Coleman, Leslee Currie, Marcia Douglas and Lu McBride** are part of the October show at BallardWorks, on NW Market St, Seattle. The show features several pieces that the group produced collaboratively, in keeping with the theme, "Circularity." Shown here: *Kerfuffle* and *String Theory*.



Roxsane Tiernan



Susan K Miller



Maggi Mason



▲ *String Theory*

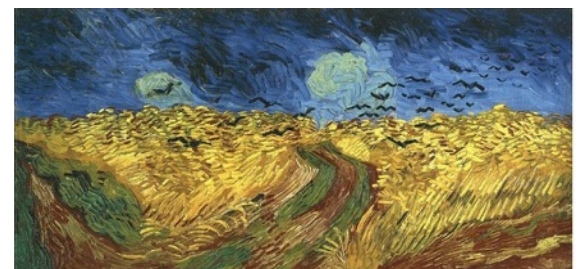
◀ *Kerfuffle*

**Musings...**

*L. Simpson*

Canadian landscape artist Robert Genn (1936–2014) wrote an art blog for many years. He talked about the "gift" of art in December 2009.

*'All art is a gift. It is first of all a gift that the maker can do it. It is then a gift to someone else, whether they pay for it or not. The wonder of it is that we cannot get the production of these gifts stopped. Art is life seeking itself. It is our intractable expression of love for the beauties, ideas and epiphanies we regularly find.'*



Vincent van Gogh, *Wheat Field with Crows*, 1890

*"I have walked this earth for 30 years, and, out of gratitude, want to leave some souvenir."* —Vincent Van Gogh



### NWCS Website

September is the best time to update your art on the Members Art page of the website. Have a look at: [Members Art](#).

Please send your new web image to Gina at: [info@nwcollagesociety.org](mailto:info@nwcollagesociety.org)

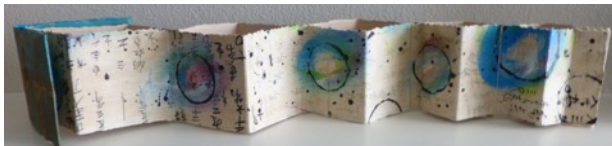
—Gina Hanzsek

### Classes / Workshops

**John Arbuckle** will be teaching a class in collage and mixed media techniques, through Edmonds Community College, October 1st. Registration information at: [www.campusce.net](http://www.campusce.net)

#### Mixed Media: Fish Bone Folds

Using a variety of mixed media techniques and collage principles, you will create an exciting fish bone fold journal. This project allows you to express your creativity in an unusual and fun way. In this one day workshop you will be working with paint, recycled materials, and a



**Kathy Collins** will be teaching a watercolor/collage workshop at Tsuga Fine Art & Framing in Bothell, November 5th.



The workshop will focus on painting and collage to form dynamic new pieces. We will paint with watercolor, then add mixed media techniques to produce shimmering syncopated effects.

Workshop includes morning and afternoon demonstrations and is geared to all levels from beginning to more advanced students. For more information or to register, email Kathy at: [kathy.collins001@gmail.com](mailto:kathy.collins001@gmail.com)

### 2017 NWCS Annual Retreat

The 2017 NWCS Annual Retreat will be again held at the Warm Beach Conference Center, near Stanwood, WA. The dates are Friday, Feb 24 to Sunday, Feb 26, 2017. Retreat Coordinator **Stacy Hamm** says, "I'm so happy that we're going to have our wonderful retreat again. The idea of this retreat is to give NWCS members a chance to get to know each other in a relaxed setting, create some art, share ideas, methods, and laughter."

Registration begins at the Sept 20th NWCS meeting, or by mail *after that date*. Stacy will be at the meeting to answer questions, and collect the \$50 deposit to register. Again this year we will need both the registration form and the hold harmless form completed at the time you pay your deposit. (This \$50 deposit is non-refundable!)



The cost this year for your room and meals will be \$298 for single occupancy and \$208 for a shared room. The price includes 7 meals from dinner on Friday to lunch on Sunday. Final payment will be due not later than Jan 24, 2017.

The Northwest Collage Society is contracted to fill a minimum of 24 rooms. If you cancel *before* February 3, 2017, the fees will be refunded, minus your \$50 NWCS registration cost. However if you cancel *after* February 3, 2017, your entire retreat payment is forfeited unless you find someone to take your place.

If you have any questions about the retreat, please call Stacy Hamm: 425-252-3617, or call 425-239-5244, or email, [hammstacy@gmail.com](mailto:hammstacy@gmail.com).

A separate email will contain details of all fees and forms, and other information needed to complete your 2017 registration.

—Stacy Hamm, Retreat Coordinator

*Don't think about making art, just get it done. Let everyone else decide if it's good or bad, whether they love it or hate it. While they are deciding, make even more art.*

—Andy Warhol



### Northwest Collage Society 2016 Juried Summer Show

Phinney Art Center, Seattle, WA  
Juror: Kelda Martensen

Show Coordinators:  
John Arbuckle  
Jan Clem

#### *Black and White with a Splash of Red*

July 22, 2016 was a warm evening. Lights were blazing, however, at the Phinney Community Center for the Black and White with a Splash of Red Show reception. Guests were treated to 52 amazing pieces of art, each one a different interpretation of the show's theme. Many "party-goers" who attended were also decked out in the show's colors. No one could miss the lass who donned an amazing chapeau festooned with red veil and feather!

For the evening, caterer Jan Clem provided an array of treats that will not soon be forgotten. Everything on the table matched the theme—who knew that wine, cakes, candies, and fruit could taste so delicious and be red, black, or white as well! It can be said that the 2016 Phinney Summer Show will last in the memories of all who attended for quite some time.

—J.Arbuckle



Gay Jensen Award for Innovation in Collage Art  
Elizabeth Halfacre  
*Burning Question*



NWCS Award  
Janet Atlas  
*Undecided*



NWCS Summer Award  
Susan Lehman  
*Reaction*



Eleanor Wolters Smith Memorial Award  
Lynn Skordal  
*Grimm*



Peggy Tuttle Memorial Award  
Sachiko Kusachi  
*It's No Fun on Your Own*



People's Choice Award  
Sue Gilbert  
*She Was Troubled by Premonitions*



Merit Award  
Kathy Parker  
*Indoor Cat*



Merit Award  
Cathy Casteel  
*Conversations in Red*



Merit Award  
Susan Miller  
*Architext*



Merit Award  
Nancy Meldahl  
*No Trespassing*



2016-2017 Northwest Collage Society Officers

Regional Rep	Gail Larson	<a href="mailto:glarson456@gmail.com">glarson456@gmail.com</a>
President	Suzy Kueckelhan	<a href="mailto:nwcsresident@nwcollagesociety.org">nwcsresident@nwcollagesociety.org</a>
Treasurer	Meg Gray	<a href="mailto:treasurer@nwcollagesociety.org">treasurer@nwcollagesociety.org</a>
Secretary	Carole Carroll	<a href="mailto:secretary@nwcollagesociety.org">secretary@nwcollagesociety.org</a>
Membership	Anne La Fever	<a href="mailto:members@nwcollagesociety.org">members@nwcollagesociety.org</a>
Shows	John Arbuckle	<a href="mailto:shows@nwcollagesociety.org">shows@nwcollagesociety.org</a>
Shows	Jan Clem	<a href="mailto:shows@nwcollagesociety.org">shows@nwcollagesociety.org</a>
Shows	Susan Miller	<a href="mailto:shows@nwcollagesociety.org">shows@nwcollagesociety.org</a>
Programs	Wendy Lee Lynds	<a href="mailto:programs@nwcollagesociety.org">programs@nwcollagesociety.org</a>
Newsletter	Liz Simpson	<a href="mailto:info@nwcollagesociety.org">info@nwcollagesociety.org</a>
Webmaster	Gina Hanzsek	<a href="mailto:info@nwcollagesociety.org">info@nwcollagesociety.org</a>
Member-at-large	Kathy Parker	<a href="mailto:kparkerncs@earthlink.net">kparkerncs@earthlink.net</a>

The **Northwest Collage Society** is an affiliate of the National Collage Society. NWCS was established in 1984 as a non-profit organization, to advance the stature of collage as a major art medium.

**Collage:** An artistic composition made of various materials (as paper, cloth, or wood) glued onto a surface.

**National Collage Society**  
**President Gretchen Bierbaum, NCS**  
 254 West Streetsboro St.  
 Hudson, OH 44236  
[www.nationalcollage.com](http://www.nationalcollage.com)

**NWCS Meetings 2016-2017**  
[www.nwcollagesociety.org](http://www.nwcollagesociety.org)

**Tues, Sept 20, 10:30 am-General**  
 Oct 18-Board

**Sat, Nov 19, 10:30 am-General**  
 Jan 17-Board

**Tues, Feb 21, 10:30 am-General**  
 Mar 21-Board

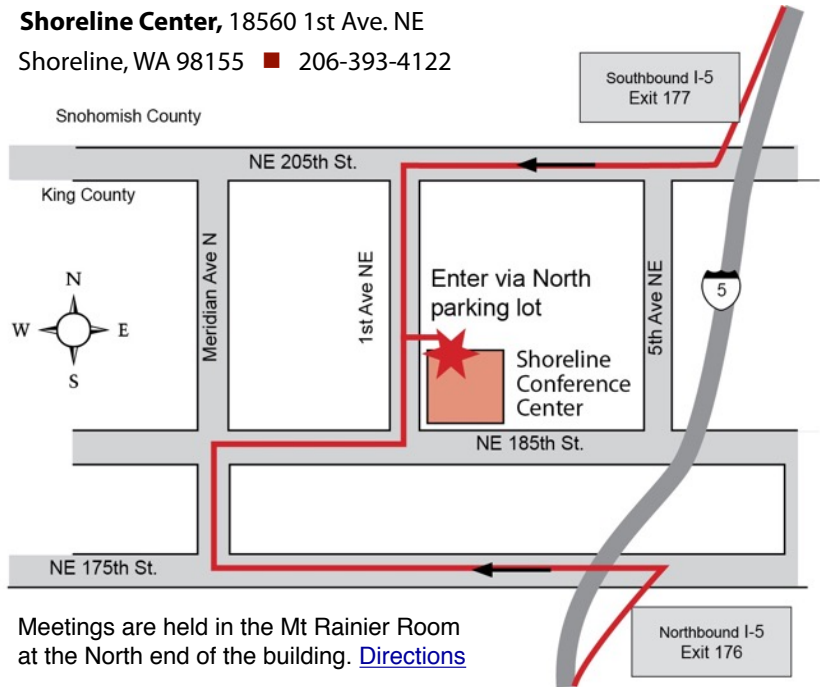
**Sat, Apr 22, 10:30 am-General**  
 May 16-Board

**Tues, Jun 20, 10:30 am-General**  
 Summer Break

Information for the **NWCS Newsletter:**  
 Liz Simpson: [info@nwcollagesociety.org](mailto:info@nwcollagesociety.org)

Information for the **NWCS Website:**  
 Gina Hanzsek: [info@nwcollagesociety.org](mailto:info@nwcollagesociety.org)

**Shoreline Center**, 18560 1st Ave. NE  
 Shoreline, WA 98155 ■ 206-393-4122



Northwest Collage Society

If you need further information about the Northwest Collage Society you may contact: Suzy Kueckelhan, NCS, 206-842-3395, [nwcsresident@nwcollagesociety.org](mailto:nwcsresident@nwcollagesociety.org) or visit our website at [www.nwcollagesociety.org](http://www.nwcollagesociety.org)

Please type or print your name as you wish it to appear in the Membership Directory.

Make checks payable to **NWCS**. Membership dues are collected each September.

Associate Members: \$40.00 a year

**Mail to:** Meg Gray  
 NWCS Treasurer  
 6104 Latona Ave NE  
 Seattle, WA 98115

APPLICATION FOR MEMBERSHIP

Name: \_\_\_\_\_

Address: \_\_\_\_\_

City: \_\_\_\_\_ State: \_\_\_\_\_ Zip: \_\_\_\_\_

Phone: (\_\_\_\_) \_\_\_\_\_ Website: \_\_\_\_\_

Email: \_\_\_\_\_

Newsletter is sent as a PDF via email