



Northwest Collage Society

Affiliate of the National Collage Society
Established in 1984 to enhance the stature of collage as a major art medium

GENERAL MEETING

SHORELINE CENTER

Mt Rainier Room

Saturday,

November 19, 2016

10:00 AM: Meet & Greet

10:30 AM: Meeting

REFRESHMENTS

Sue Gilbert

Colleen Monette

Kim Weers

Coffee, Gail Larson

COLLAGE DRAWING

November Donor:

Lynn Skordal

NWCS Winter Show

January 19–March 26, 2017

Juror: David Martin

Cascadia Art Museum

190 Sunset Ave E

Edmonds, WA

cascadiaartmuseum.org

(Details, p. 2)

NWCS & Cancer Lifeline

October 27–December 6

Read Between the Lines: A Collaboration Between the Northwest Collage Society and Cancer Lifeline

Members of the Northwest Collage Society present original artwork in response to poetry written by participants in the Cancer Lifeline writing program.

President's Message

Years ago, after I had finished college and started out on my first job as a middle school art teacher, I learned how special an 8th grade boy and his parents could be.

I had prepared for a lesson to discuss well-known Northwest artists. Of course, I started with Paul Horiuchi. As I was talking with the kids, I found that many of them had been impressed with the large Horiuchi collage in the middle of Seattle's 1962 World's Fair. In the middle of my discussion, one boy raised his hand and asked "What about Morris Graves, Kenneth Callahan, Guy Anderson, and Mark Tobey." I was amazed that this 14 year old boy even knew about these four Pacific Northwest mystics. So, I told him, "We will also look into them and their art as we go along."

The next morning, I walked into my classroom and found the young man carrying a very large bag. We talked for a while and he started to pull one painting after another out of his bag. They were all small (12" x 12"), and all beautiful. All were paintings by the four Pacific Northwest mystics. I asked him where the pieces came from. He said, "...my room". He must have seen the shock on my face, so he explained. "My parents own a gallery and each artist let me choose a small painting for my birthday." As soon as I could, I called his mother about the paintings. She told me the paintings belonged to him and he could do anything he wanted with them.

That day he became the teacher and I became the student. What great insight he had about these wonderfully talented artists! I will never forget this experience. He became a young man to me that day, no longer a boy.

I still wonder where he is today, and if he still has those special paintings. I sure hope so!

—Suzy

MEMBERS' CHOICE CHALLENGE

Saturday, November 19, 2016

MY DEEP SECRET

How Deep Is It? Can Art Speak Out Loud?

Parameters: **4" x 6" collage**

Mounted on 8"x10" white 4-ply mat board,

Unsigned on front, Signed on back of mat board.



Attention given to: overall good design, cohesiveness, imagery, correlation of lights and darks, focus. Keep an open mind & challenge yourself to create a small artwork!

\$25 Cash Award to the winner!



November 2016 Program – Robert Stockton

Mixed media and collage artist Robert Stockton will talk about what inspires his work and how he puts his collages together.



Artist Statement

I am a collector. Which, I guess, is one of the major requirements for someone who works in mixed media, using "found" materials. I also use traditional artist's materials, such as acrylic and oil paints, gouache and watercolors, and colored pencils. My real fascination is with the imaginative or unusual juxtaposition of textures, patterns, and colors which help to create interesting, and, sometimes, surprising visual relationships, or "connections," in my work. I am constantly

picking up things which I find interesting that are laying on the ground: scraps of paper or cardboard; old washers; rusty pieces of metal; old wood with faded, cracked, or chipped paint; buttons; objects flattened by traffic; etc. Each of these objects has individual surface characteristics, or textures, based on where it has been, and what has happened to it. I'm particularly interested in objects which bear marks left by both man and nature... I attempt to use the visual relationships to create a new "aesthetic" for these "castoffs," so that people may view them in a new way."

Images © Robert Stockton, left to right: *Off the Radar*, *What the Gods Allow*, *Fall into Place*.

He who makes no mistakes makes nothing. —George Bernard Shaw

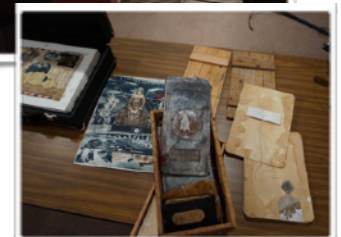
September Program: Larry Calkins

Larry Calkins shared a history of his collage path through a slide show presentation. "Collage is sculptural, relaxing and a way to work through grief," says Calkins. He suggested a couple of different challenges to help in collage creation. One fun idea is to create 10 collages starting with only one element in the first collage, up to 10 elements in the tenth collage. Another is creating a circular collage, a good challenge.

Calkins' preferred surfaces are either a medium-fine grade density board with Gesso, or watercolor paper, typically 12" x12". He uses a lot of newspaper, magazine, writing, and letters in his collages. He enjoys combining writing and collage, and teaches a class at the Kirkland Center with a writer, based on this combination. "Time plays an important role in my work," says Calkins. So does containment, the love of old rotten paper and simplicity.

He doesn't like things to get too complicated. He feels that art is important to the viewer and the viewer is important to the artist.

Calkins teaches at Kirkland Art Center, Pratt Fine Arts, Northwest Encaustic, Winslow Art Center, and artEAST. In addition to teaching, he exhibits at the IMA gallery in Pioneer Square, the Rice Pollack Gallery, Provincetown, MA, the American Primitive Gallery, NYC, and several other galleries nationwide.



—Notes & photos, Gina Hanzsek



November Meeting Notes
—Carole Carroll

Suzy Kueckelhan called the meeting to order and welcomed members; no guests were present.

Meg Gray thanked members for their timely dues payments.

Stacy Hamm accepted registrations for the annual collage retreat at Warm Beach in February 2017.

Gail Larson announced the 23rd Annual Juried Show of the National Collage Society and encouraged members to view it online.

Gina Hanzsek will be updating the members artwork pages on the NWCS website.

John Arbuckle discussed the Cancer Lifeline Collaborative Show, and **Jan Clem** gave details of our upcoming juried show January 19–March 26, 2017, at the Cascadia Art Museum in Edmonds.

The prospectus is posted on EntryThingy, which can be accessed from our website. The entry deadline is November 28, and the juror is David Martin, the museum curator. More information will be presented at the November meeting.

The collage drawing was won by **Lynn Skordal**. The program was a presentation by mixed media artist **Larry Calkins**.

New Members

Jane Brown, Seattle
Kathleen Kemley, Seattle
Janice Patterson, Shoreline
Ann Ferron, Mercer Island

Have you forgotten your dues?

Membership renewal fees were due in September, \$40 for the year.

Please bring a check to the November meeting, or mail to treasurer **Meg Gray** (mailing address on page 7).

Or use PayPal, available on the NWCS website: [LINK](#)



Thank you!

The hardest battle is to be nobody but yourself in a world that is doing it's best, night and day, to make you like everybody else.

—e. e. cummings

Northwest Collage Society Winter Show

Collaged Impressions of Northwest Social Realism and the American Scene 1930 – 1950

January 19 - March 26, 2017

Cascadia Art Museum, Edmonds, WA

The NWCS 2017 Winter Show will feature original collaged works of art, inspired by the artworks of these Northwest artists: Kenneth Callahan, Pieter Van Dalen, Fay Chong, Yvonne Twining Humber, Abe Blashko, Anne Kutka McCosh, Irwin Caplan, David McCosh. NWCS members are encouraged to research the artists' works, and to create a collage based on a particular piece of art by the artist that they choose. The collage can be based on any element or impression of the piece, e.g., color, form, or emotional response.

The juror is David Martin, Curator of Cascadia Art Museum.

Important Dates:

- November 28, 2016 - ONLINE ENTRY SUBMISSION DEADLINE
- December 4 - Notification of acceptance
- January 12, 2017 - DELIVER accepted artwork: 9:00 am to 12:30 pm, Cascadia Art Museum
- January 19 - NWCS Winter Show opens at the Cascadia Art Museum
- January 27 - Reception and Awards 7- 9pm
- March 26 - Show closes.
- March 27 - PICK UP ARTWORK: Monday, March 27, 1:30 - 5pm, Cascadia Art Museum

Northwest Collage Society 2017 Summer Show

Seattle City Hall
Details TBA in January 2017

Member News



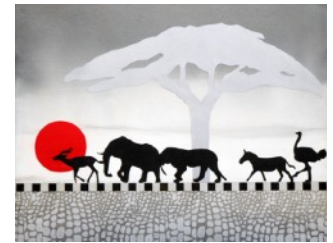
Susan K Miller



Donna Jean Perry

Donna Jean Perry won 2nd Place for Miniatures at the Mountlake Terrace Show, and sold both collages juried into the Schack-toberfest Show. She also has pieces in Shoreline/Lake Forest Park's "6x6 NW" show, and Parklane Gallery's "Around The Block" show in Kirkland.

Kim Weers' *Headed Home* was one of her 2 artworks selected for the Arts of the Terrace Juried Show, September.



Kim Weers

Susan K Miller's *Window Seat*, and **Elizabeth Halfacre's** *Muse*, have been juried into the "Women Artists Coast to Coast: West" show at the WA State Convention Center, Oct 13, 2016 -Jan 11, 2017. Elizabeth also donated a collage to ARTbeat, the Kirkland Arts Center Benefit Auction.

Kathy Parker has four collages in the Seattle Women's Art Collective show, Oct 6–Dec 18, at The Studios, on Fifth Ave in Seattle.

Robert Stockton had one piece, *Gleneden Avenue, Oakland, 1968* selected for the 4th Annual ICON Show at Lynn Hanson Gallery in Pioneer Square in September.



Elizabeth Halfacre



Yael Zahavy-Mittelman



Robert Stockton

Yael Zahavy-Mittelman has a solo show in the EAFF Gallery, at the Frances Anderson Center, Nov 2–Dec 14, in Edmonds.

Linda McClamrock's collage *Baby Sister* was purchased by the City of Seattle for their Portable Works Collection.

GJ Gillespie has 5 collages in the Eastside Surface Design Association Show in North Gallery at Vision 5, Oct 1–29, Redmond.

Wendy Lee Lynds and **Tess Ettel** are in the show "When Right Meets Left: Collaboration of Two Distinct Styles", in the Ballard Art Walk, Nov 12, at Annie's Art & Frame in Ballard.



Linda McClamrock



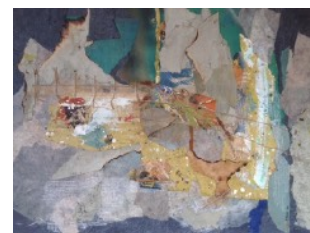
GJ Gillespie



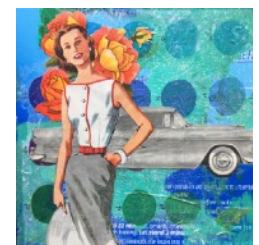
Sachiko Kusachi

Sachiko Kusachi will have collages along with a series of monotypes exhibited at Studio 103 in the TK Arts Building in Pioneer Square for the month of December.

Katherine Dickerson's collage, *Epidemic 1*, is in the show "BARN at BAC: Making Community" at Bainbridge Arts and Crafts Gallery, Bainbridge



Kathy Parker



Tess Ettel

Island, Nov 4–27. The collage is a response to heroin addiction in our communities.

Kathy Collins' mixed media collage *Parallel Constructions* appears in the December issue of Watercolor Artist Magazine. Her article features step-by-step photos on her technique for combining watercolor and collage.

Judith Sanders has a one woman show, "Pensive Phantasms", Oct–Nov, at Studio Beatrice, Corvallis, OR.

Arlene Mrz had an artwork selected to be reproduced and featured on the Piroshky Piroshky Bakery bags at Pike Place Market.



Kathy Collins



Katherine Dickerson



Arlene Mrz



NWCS Website

Autumn is the time to update your art on the website members [page](#). Returning members, please send in your yearly updated collage. New members, send me your image and it will be posted to the website prior to the next general membership meeting. The website is currently being updated. Artworks older than 4 years will be removed, so send your new web image (800 pixels on the longer side) to:

Gina Hanzsek at: info@nwcollagesociety.org

NWCS Board Members

Several members have asked about helping with the NW Collage Society Board. Yes, please! We are always looking for more volunteers to help in a myriad of ways. [HERE](#) is a link to review the various job descriptions of board members.

In the coming year we will be looking for new candidates to fill the positions of a few long-standing members. This is your chance to get involved in planning the future direction of the NWCS. We need you! New ideas and renewed enthusiasm will help the Board move forward in a meaningful way with fresh insights.

If you think you might be interested in learning more about this, please contact our membership coordinator, Anne La Fever:



members@nwcollagesociety.org

You gain strength, courage and confidence by every experience in which you really stop to look fear in the face. You are able to say to yourself, 'I lived through this horror. I can take the next thing that comes along...' You must do the thing you think you cannot do.

—Eleanor Roosevelt

2017 NWCS Annual Retreat February 24 - 26, 2017



The 6th Annual 2017 NWCS Retreat will be held at the Warm Beach Conference Center, near Stanwood, WA. The idea of the retreat is to give members a chance to get to know each other in a relaxed setting, create some art, share ideas, art methods, and laughter.

The cost includes room, meals from lunch on Friday through lunch on Sunday, and a large spacious conference room in a great facility. Single occupancy is \$298, and \$208 for a shared room. Final payments are due not later than Jan 24, 2017. Download signup form for details. [LINK](#)

If you have any questions about the retreat, contact Stacy Hamm: 425-252-3617, or email, stacyhamm@ymail.com

Holiday Show



Gay Jensen

Gay Jensen invites NWCS members and their friends to her Annual Holiday Show and Sale (with artist Paul Lewing and jewelry artist Kathy Dannerbeck), December 3 & 4, 10am-5pm, at Paul Lewing's Studio, 105 N. 200th St, in Shoreline.

Gay will be celebrating her retirement at this event and invites you to party with her. Many artworks will be at special retirement sale prices, and there will be a variety of delicious treats to savor!



Maryann J Riker, *Blinded 2*, NCS Development Director Book Award



Lynn Skordal, *The Bridegroom*



Anne La Fever, *Sensory Overload*

National Collage Society

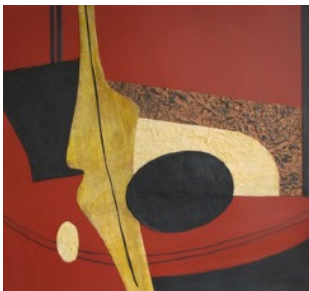
The 32nd Annual Juried Exhibit is online for viewing on the NCS website [HERE](#).

Six members of the NWCS were juried into the show. Both Maryann Riker and Judith Sander received NCS awards. Anne La Fever was accepted as a Signature Member of the NCS.

Congratulations to these artists!



Judith Sander, *Paris Apartment*, Michael Rosenfeld Gallery (NYC) Award



Gail Larson, *Tempo I*



Colleen Monette, (L) *Warranted*, and (R) *Language Arts*



Looking back...

Recently I had occasion to visit Northwest Hospital in North Seattle. While there I checked up on a triptych that the NW Collage Society gave to the hospital about 15 years ago. It was presented after the hospital had provided space in the main lobby for a NWCS Juried Show. Though the administration has changed (the hospital became part of

UW Medicine), our collage remains, in the waiting area of the Emergency Room.

The collage vignettes were designed to represent the beauty of the Northwest: green, west of the mountains, and golden, east of the mountains. Most of the members at the time contributed pieces, and a committee led by Gail Larson and Suzy Kueckelhan put it all together. Nice to see that it is still appreciated!

—Notes & photos, Kathy Parker





2016-2017 Northwest Collage Society Officers

Regional Rep	Gail Larson	glarson456@gmail.com
President	Suzy Kueckelhan	nwcspresident@nwcollagesociety.org
Treasurer	Meg Gray	treasurer@nwcollagesociety.org
Secretary	Carole Carroll	secretary@nwcollagesociety.org
Membership	Anne La Fever	members@nwcollagesociety.org
Shows	John Arbuckle	shows@nwcollagesociety.org
Shows	Jan Clem	shows@nwcollagesociety.org
Shows	Susan Miller	shows@nwcollagesociety.org
Programs	Wendy Lee Lynds	programs@nwcollagesociety.org
Newsletter	Liz Simpson	info@nwcollagesociety.org
Webmaster	Gina Hanzsek	info@nwcollagesociety.org
Member-at-large	Kathy Parker	kparkerncs@earthlink.net

The **Northwest Collage Society** is an affiliate of the National Collage Society. NWCS was established in 1984 as a non-profit organization, to advance the stature of collage as a major art medium. **Collage:** An artistic composition made of various materials (as paper, cloth, or wood) glued onto a surface.

National Collage Society
President Gretchen Bierbaum, NCS
 254 West Streetsboro St.
 Hudson, OH 44236
www.nationalcollage.com

NWCS Meetings 2016-2017
www.nwcollagesociety.org

Tues, Sept 20, 10:30 am-General
 Oct 18-Board

Sat, Nov 19, 10:30 am-General
 Jan 17-Board

Tues, Feb 21, 10:30 am-General
 Mar 21-Board

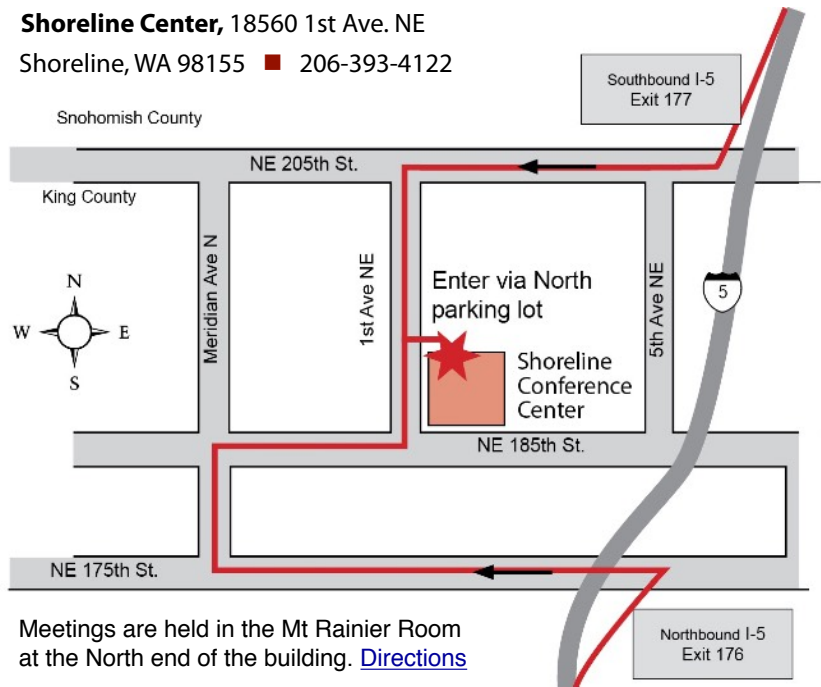
Sat, Apr 22, 10:30 am-General
 May 16-Board

Tues, Jun 20, 10:30 am-General
 Summer Break

Information for the **NWCS Newsletter:**
 Liz Simpson: info@nwcollagesociety.org

Information for the **NWCS Website:**
 Gina Hanzsek: info@nwcollagesociety.org

Shoreline Center, 18560 1st Ave. NE
 Shoreline, WA 98155 ■ 206-393-4122



Northwest Collage Society

If you need further information about the Northwest Collage Society you may contact: Suzy Kueckelhan, NCS, 206-842-3395, nwcspresident@nwcollagesociety.org or visit our website at www.nwcollagesociety.org

Please type or print your name as you wish it to appear in the Membership Directory.

Make checks payable to **NWCS**. Membership dues are collected each September.

Associate Members: \$40.00 a year

Mail to: Meg Gray
 NWCS Treasurer
 6104 Latona Ave NE
 Seattle, WA 98115

APPLICATION FOR MEMBERSHIP

Name: _____

Address: _____

City: _____ State: _____ Zip: _____

Phone: (____) _____ Website: _____

Email: _____

Newsletter is sent as a PDF via email