

Northwest Collage Society

Affiliate of the National Collage Society
Established in 1984 to enhance the stature of collage as a major art medium

GENERAL MEETING

SHORELINE CENTER

Mt Rainier Room

Tuesday, June 21, 2016

10:00 AM: Meet & Greet

10:30 AM: Meeting

REFRESHMENTS

Wendy Lee Lynds

Bonnie Kuhn

Lu McBride

Coffee, Gail Larson

COLLAGE DRAWING

June donor:

Jan Clem

President's Message

A number of years ago, I attended the 'Intensive Studies Seminar' in the Santa Fe, NM area. The program was an outstanding learning experience. When I returned home, I found that two of the instructors, Christopher Schink and William 'Skip' Lawrence, had put together an art magazine, *The Palette*. That was 14 years ago, and pack rat that I am, there are a number of *The Palette* issues in my studio. Each issue contains information aimed at ways to help artists reach their artistic goals.

One essay by Skip Lawrence addressed 'What is Content'. I found it quite interesting, and here are some extracts:

- "You may be confused about the idea of content—what the word means and how and where you find it. For a painter (or in our case, a collage artist) starting a new piece of work, the concept is really very simple: form *does* follow content; that is, first, you decide on an idea, and then you make a plan as to how to best express it. Example: Writers begin with a story line, architects with a vision, musicians with a mood, and visual artists with a feeling or function."
- "Each of these builders of art began with an idea, sometimes a vague idea, but nonetheless, an idea."
- "We do not need great ideas; we simply need an idea, our own idea."
- "Content is how we see, feel, and think about the creation we are developing."
- "To produce a creative work, you must first have an idea, then give it form, and finally rejoice when your creation feels good—not because of your technique and design, but because it was your idea clearly and sincerely expressed."

I hope you find these comments helpful in fulfilling your collage pursuits. Have a happy and productive summer!

—Suzy

Northwest Collage Society Juried Summer Show

*"BLACK and WHITE
with a Splash of RED"*

Juror: Kelda Martensen. [Website](#).

July 20–August 26, 2016

Reception: Friday, July 22, 7 PM

Optional Reception Attire:

BLACK and WHITE

with a Splash of RED

Important Dates

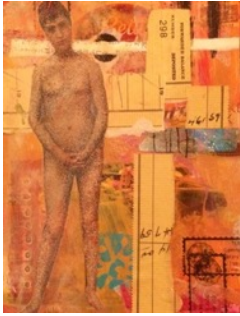
- **June 7, 2016:** ENTRY DEADLINE on website: [NWCS Summer Show](#)
- **June 19:** Notification of acceptance
- **July 18:** DELIVER accepted artwork: 9 am–1 pm, [Phinney Center Gallery](#) 6532 Phinney Ave N, Seattle
- **July 20:** Summer Show opens
- **July 22:** Reception and Awards
- **August 26:** Summer Show closes
- **August 26:** PICK UP ARTWORK: Friday, 5–9 pm, Phinney Center Gallery

MEMBERS' CHOICE CHALLENGE AWARD

CONGRATULATIONS to **Meg Gray** for winning the April 'Challenge' Award. Her collage was chosen by members as the most successful effort in expressing the theme of 'SPRING FORWARD'.



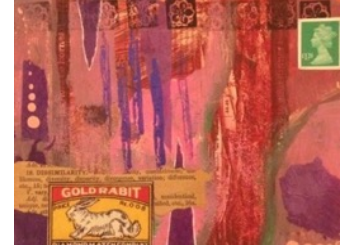
June 2016 Program — Wendy Lee Lynds
Make It—Mail It!



© Wendy Lee Lynds

Fast and furious, all play, "no stress" creating. Yes, during our meeting! Well okay, we will indulge our faithful President Suzy in taking care of business first, and then we will play! Bring scissors, a glue stick, **five pieces of collage fodder**, and any other mark-making tools, or stamps and ink that you love. Bring some for sharing, perhaps?

We will play with cardboard and paper, and pass it on. Add of a bit of you on someone else's card and they will do the same for you! Come away with a wonderful little postcard (or two) to cheer someone's day! And who knows? Something else may be thrown in there for extra fun! You never know!
—Wendy Lee



© Wendy Lee Lynds

April 2016 Program Notes: Jackie VanNoy

Jackie VanNoy states that she is primarily a painter, but finds collage to be a useful tool in her work. Often when she completes a series of work she is left with piles of paper scraps in her studio. As a past quilter, she likes to arrange these scraps into squares and strips onto museum quality foam core. She paints using 3 values: white, medium, and dark/black. When dry, she continues to work on the piece, using torn pieces of unsuccessful paintings and also black paper to form a pleasing composition. Some of the resulting works are deemed good, some are hopeless, and some just need a bit more work. These small works serve as inspiration for Jackie's larger paintings. Two artists who have influenced Jackie's artwork are Ed Betts and Richard Diebenkorn.

Her website is jackievannoy.com



Over the Pass
© Jackie VanNoy

Volunteer Needed: Show Coordinator

by John Arbuckle and Jan Clem

Over the past few months we have been asking for volunteer help to take on one of the yearly NW Collage Society Shows. Although several people have investigated the possibility, it has not worked out yet. **WE NEED HELP!**

The Job Description: *

1. Write prospectus. This is really easy because you just cut and paste, changing dates and such, from the one that is currently on EntryThingy.
2. Receive emails from EntryThingy that someone has posted their art for juror consideration. Send email stating work has been uploaded appropriately to EntryThingy. Check that each piece meets requirements for the show based on the prospectus.
3. Collect checks for entry fee and check PayPal to see that entry fee has been paid. Email each participant verification of entry and payment.
4. Maintain an Excel spreadsheet on all information, just as a bookkeeping method to keep it all clear. Excel is easy!
5. After show entry deadline, prepare the entries for the juror.
6. After the juror is finished and has chosen entries/awards, notify each participant on acceptance (or not) via email.
7. Answer members questions, usually via email.
8. Day of the art delivery: be onsite and have everyone sign in work. Same procedure for date that work is returned.
9. Be on hand both the dates of installation and take down to help with it.
10. Prepare the awards and present them at the reception.

***Note that each show coordinator will also serve as a board member.**

Please contact one of the board members if you are interested: NWCS



April General Meeting Notes

—by Carole Carroll

Suzy Kueckelhan opened the meeting at 10:30 AM. **Anne LaFever** introduced member, **Bonnie Kuhn** and welcomed several guests.

Meg Gray gave the treasurer’s report and asked members to vote on the *Spring Forward* Challenge.

Gail Larson told us that the National Collage Society is spotlighting a Signature Member each month on their website. The NCS postcard show is currently at the Quinlan Visual Arts Center in Gainesville, Georgia.

Keith Pace said the NCS is asking Signature Members to send work to Kent State University where it will be used for teaching purposes.

Gina Hanzsek will update members’ artworks on the website in August but images may be sent anytime.

John Arbuckle discussed the summer show at the Phinney Center. The prospectus can be found both on the website and EntryThingy. Accepted work is to be delivered to the Phinney Center and the packaging taken home with the artist. Additionally, John asked for a volunteer to handle one show per year, and he had a written job description to show those who might be interested.

Jan Clem won the collage exchange by **Betty Jensen**. Jan will bring the June collage.

The Members’ Choice Collage Challenge was won by **Meg Gray**.

Wendy Lee Lynds announced that the recent member survey revealed that members like programs with artist presentations. She introduced **Jackie VanNoy**, who gave a presentation on painting and collage.

Refreshment Volunteers

NWCS always needs volunteers to bring the refreshments for general meetings. Just think about having to stop for your own coffee!

If you haven’t volunteered before,

PLEASE SIGN UP!

Contact Suzy Kueckelhan:

NWCSpresident@nwcollagesociety.org



32nd NCS Annual Juried Exhibit

Downtown Gallery,
 Kent State University, Kent, OH
 Entry Deadline: July 15, 2016
 Exhibit Dates:
 September 29–October 29, 2016

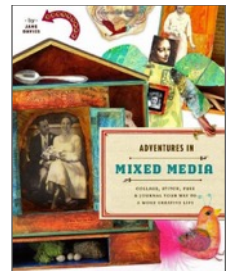
Membership – Anne LaFever

The NW Collage Society currently has 108 talented members—good for us! We have many volunteer opportunities within the NWCS, and we urge you to participate. Not only will you be helping the NWCS board, but you’ll be meeting fellow members and expanding your artistic knowledge.

Mixed Media Book

Adventures in Mixed Media: Collage, Stitch, Fuse & Journal Your Way to a More Creative Life

There is so much information in this new book by **Jane Davies** that it’s almost overwhelming! From the amazon.com review: “In lessons that inspire creativity, Jane Davies demonstrates a variety of techniques using paper, fabric, embellishments such as beads, feathers, and ribbons, fusible and nonfusible fibers, and even foamcore.”



Jane Davies

“Whether you are a beginner...or an expert collage artist eager to learn new uses for familiar materials, this is the book to guide your creative explorations in collage and mixed media.”

This book offers step-by-step instructions and is filled with many inspiring images for the projects and techniques described. Never having used Tyvek, I liked the project examples shown in Davies’ book. So I acquired a small piece of Tyvek leftover from my neighbor’s garage remodel. But it will probably stay in pristine condition until next year’s NWCS retreat, where everyone tries something new!

—Liz Simpson

Book Reviews

If you are interested in submitting a collage relevant book review for the newsletter, please email it to me. Include an image or link to an image, and keep the review to 150 words or less. Newsletter Editor: info@nwcollagesociety.org.

*Fullkommenhet er kjedelig.
 (Perfection is boring.)*

—Old Norwegian saying

Member News



Susan K Miller



Roxsane Tiernan



Gary J Gillespie



Linda McClamrock

Susan K Miller will have artworks showing at University Unitarian Church, Jul 7–Aug 20. She has recently been juried into the Women Painters of Washington.

Gail Larson has 13 mixed media and collage pieces at the Bay Club, Port Ludlow, through May; she also has a piece in the Olympic Peninsula Art League Show, May 27–Jun 26, at the Port Angeles Fine Arts Center.

Laurie Richardson is participating in the upcoming ODDMALL Seattle, a juried show of unique creations, Jun 4–5 at Everett Holiday Inn, Everett, WA [Link](#). She is also a featured artist at Edmonds Vision Center, in the Jun 16 Edmonds Art Walk.

Roxsane Tiernan is in the show “It’s a Mixed Bag”, through May at Hycroft University Women’s Club, Vancouver, BC. She will also participate in the “Pacific Rim Show”, along with 5 artists from Guiyang, China, Jul 22–24, at the Chinese Cultural Centre and Dr. Sun Yat Sen Chinese Garden, Vancouver, BC.

Elizabeth Halfacre will exhibit five collages in the “Figuratively Speaking” Exhibit May 19–Sept 13, at Ida Culver House Broadview, Greenwood Ave, Seattle.

Barbara Mills has collages at Collective Visions Gallery and Poulsohemian Coffeehouse in the ongoing show “Ars Poetica 2016 West Sound Poets and Artists”, in which juried poems and artworks are displayed side by side.

Gay Jensen and **Gary J Gillespie** have had artwork accepted into “Fiber Fusion”, the Washington Surface Design Association Juried Exhibit that will travel to four galleries in 2016–2017. The first showing of these 54 selected artworks will be June 1–23 at Allied Arts Gallery, Richland, WA. For more information about this traveling exhibit see the website: [Fiber Fusion](#). View GJ Gillespie’s Blog, [here](#).

Susan Lehman’s *Doors & Windows* is included in “2016 Artworks Northwest”, the Umpqua Valley Arts Association 8-State Juried Exhibit, May 6–Jul 8, Roseburg, OR. More information about this event [here](#).

Linda McClamrock had a piece juried into the Pratt Fine Arts Auction, and is participating in the Northwest Folk Life Festival on Memorial Day weekend.

Carole Bleistein had a collage accepted in the ISEA (International Society of Experimental Artists Association) Annual International Exhibition, Jun–Aug, at the Crayola Gallery, in the Banana Factory, Bethlehem, PA.

Wendy Lee Lynds and **Jan Clem** are in the exhibit “Taking a Leap: EDGE Graduates 2016” at Lynn Hanson Gallery, Jun 2–25, in the Tashiro Kaplan Building, Seattle. They are part of a group of 13 artists who completed the Artist Trust 2016 EDGE Professional Artist Development for Visual Artists Program. The art in this show encompasses a wide range of mediums: oil paintings, mixed media, watercolor, hand built ceramics, digital collage, art welding, and photography.



Gail Larson



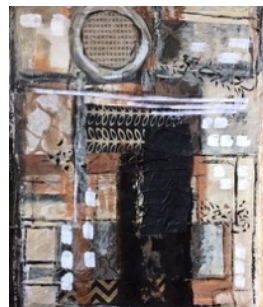
Elizabeth Halfacre



Gay Jensen



Jan Clem

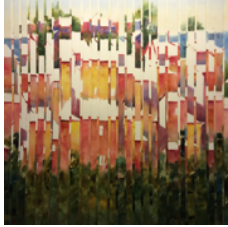


Carole Bleistein

To accomplish great things, we must not only act, but also dream, not only plan, but also believe.

—Anatole France

Classes / Workshops



Kathy Collins

Slice and Dice!

Watercolor/Collage Workshop

Kathy Collins has been experimenting with new techniques over the past year, and will show you how to put new life into your failed (or just tired) watercolors. Class will be held at the Eastside Daniel Smith Store in Redmond, Saturday, Jun 25, \$100.

Register at: [Daniel Smith](#)

Encaustic Collage –Larry Calkins

In this workshop you will build collages and mixed media works on panels and on paper, working with a variety of papers and cloth. Collage with encaustic wax is a reversible and simple alternative to working with glues. Saturday & Sunday, June 4 & 5, at NW Encaustic in West Seattle, \$220. For more information or to register: nwencaustic.com

Calls for Artists

Columbia City Gallery: *H2O: What is it worth?* 11th Annual Juried Exhibit. Deadline, June 5: [Link](#)

Art Port Townsend: *Expressions Northwest*, 18th Annual Juried Show. Deadline, June 10: [Website](#)

Shoreline Arts Festival: Annual Juried Show 2016. Deadline, June 13: [Website](#)

Puget Sound Bird Fest : Edmonds. Original artwork representative of Puget Sound birdlife for the 2016 Puget Sound Bird Fest poster, sponsored by Edmonds Arts Festival Foundation. Deadline, June 30: [Website](#)

A variety of calls, regional and national may be found on both these websites:

CaFE™ : callforentry.org/

Artist Trust: artisttrust.org



Call for Artist Instructors

The Shoreline–Lake Forest Park Arts Council is seeking proposals from local and regional artists who wish to teach during their Fall 2016 & Spring 2017 Create & Make Workshop Series, held on

Wednesday evenings from 6:30pm to 8:30pm in Shoreline.

Deadline, June 30: shorelinearts.net



Annual Artists' Garage Sale, Saturday, June 4, Schack Art Center, Everett. Featuring art supplies, paintings, glass, ceramics, old stock, seconds, and new stock. All at garage sale prices. schack.org.



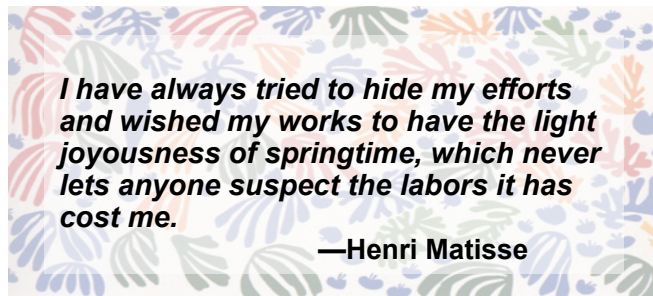
Images © Marc Pouyet



French artist Marc Pouyet is a nature artist, a graphic artist, and an author-illustrator. He has written many books on the art that he creates, and numerous magazines have published articles about his art.

Pouyet's land art sculptures are simple creations, using natural materials that are both fragile and solid. Although he was influenced by other land artists (e.g., Robert Smithson, Andy Goldsworthy) the photographs in his books reveal artworks that are imaginative, more colorful, and ephemeral. He lives in France; in addition to creating his land art, he offers courses and workshops for adults and children.

Website link: marc-pouyet





2015-2016 Northwest Collage Society Officers

Regional Rep	Gail Larson	glarson456@gmail.com
President	Suzy Kueckelhan	NWCSpresident@nwcollagesociety.org
Treasurer	Meg Gray	treasurer@nwcollagesociety.org
Secretary	Carole Carroll	secretary@nwcollagesociety.org
Membership	Anne La Fever	members@nwcollagesociety.org
Shows	John Arbuckle	shows@nwcollagesociety.org
Shows	Jan Clem	shows@nwcollagesociety.org
Programs	Wendy Lee Lynds	programs@nwcollagesociety.org
Newsletter	Liz Simpson	info@nwcollagesociety.org
Webmaster	Gina Hanzsek	info@nwcollagesociety.org
Social Media	Teresa Ettl	info@nwcollagesociety.org
Member-at-large	Kathy Parker	kparkerncs@earthlink.net

The **Northwest Collage Society** is an affiliate of the National Collage Society. NWCS was established in 1984 as a non-profit organization, to advance the stature of collage as a major art medium.

Collage: An artistic composition made of various materials (as paper, cloth, or wood) glued onto a surface.

National Collage Society
President Gretchen Bierbaum, NCS
 254 West Streetsboro St.
 Hudson, OH 44236
www.nationalcollage.com

NWCS Meetings 2015-2016
www.nwcollagesociety.org

Tues, Feb 16, 10:30 am-General
 Mar 15-Board

Sat, Apr 16, 10:30 am-General
 May 17-Board

Tues, Jun 21, 10:30 am-General
 Summer Break

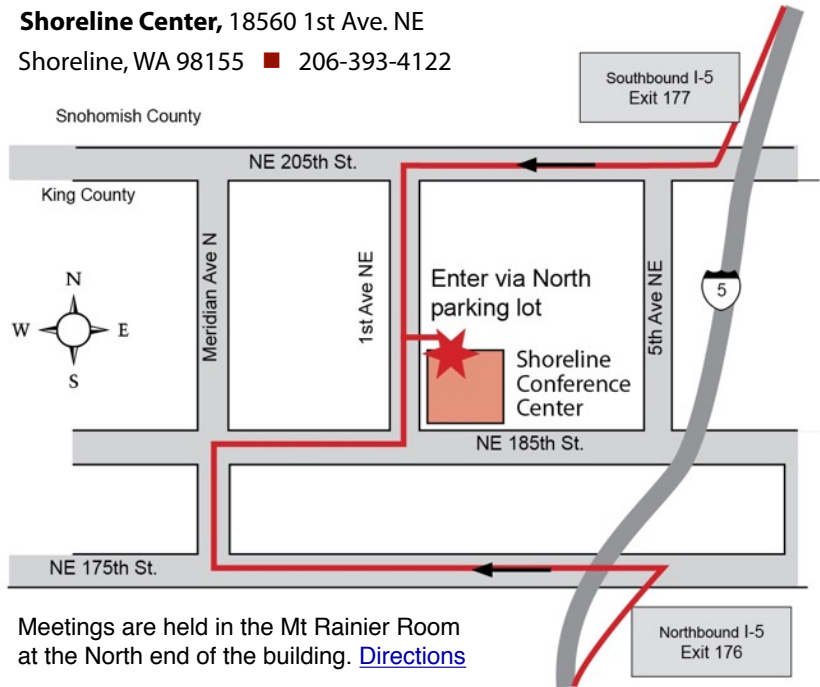
Tues, Sept 20, 10:30 am-General

Reminder: Annual Membership Dues
 Due by September 1st
 Pay via check (mailing address below), website (PayPal/credit/debit), or in person at the September meeting.

Information for the **NWCS Newsletter:**
 Liz Simpson: info@nwcollagesociety.org

Information for the **NWCS Website:**
 Gina Hanzsek: info@nwcollagesociety.org

Shoreline Center, 18560 1st Ave. NE
 Shoreline, WA 98155 ■ 206-393-4122



Meetings are held in the Mt Rainier Room at the North end of the building. [Directions](#)



Northwest Collage Society

If you need further information about the Northwest Collage Society you may contact:
 Suzy Kueckelhan, NCS, 206-842-3395, suzyku@msn.com or visit our website at www.nwcollagesociety.org

Please type or print your name as you wish it to appear in the Membership Directory.

Make checks payable to **NWCS**. Membership dues are collected each **September**.

Associate Members \$40.00 per year

Mail to: Meg Gray
 NWCS Treasurer
 6104 Latona Ave NE
 Seattle, WA 98115

APPLICATION FOR MEMBERSHIP

Name: _____

Address: _____

City: _____ State: _____ Zip: _____

Phone: (____) _____ Website: _____

Email: _____

Newsletter is sent as a PDF via email