

Northwest Collage Society

Affiliate of the National Collage Society

Established in 1984 to enhance the stature of collage as a major art medium

GENERAL MEETING SHORELINE CENTER

Saturday, April 16, 2016

10:00 AM: Meet & Greet
10:30 AM: Meeting

REFRESHMENTS

Kim Determan
Elizabeth Halfacre
Stacy Hamm

COLLAGE DRAWING

April donor:
Betty Jensen

**Please Note:
Meeting will be held in the
Ballinger Room.
(South side of building)**

President's Message

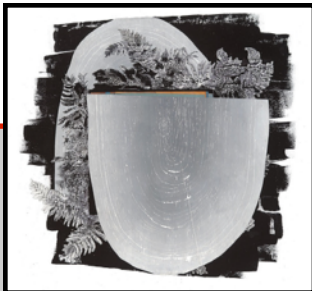
Do you find that your studio, like mine, is always cluttered with bits and pieces of paper? They can be found all over the floor, on the shelves, or under and inside of books, etc. I do really love all my papers. So I have been doing a little research about clutter. Surprisingly, I have found out that a cluttered collage studio has its virtues.

During this little adventure, I ran across a study published by Psychological Science. This University of Minnesota study program split participants first into two groups, then divided half of them into one of two rooms (one tidy and the other messy). Then each group was asked to come up with different uses for ping pong balls. The ideas from the messy room "were rated as more interesting and creative when evaluated by impartial judges." By contrast, the orderly room environments "encouraged playing it safe."

The conclusions were that "disorderly environments seem to inspire breaking free of tradition, which can produce fresh insights. Being in a messy room led to something that businesses, industries, and societies want—more creativity."

I am giving you a little "food for thought" to help with our cluttered studios, an excellent quote by Albert Einstein: *If a cluttered desk is a sign of a cluttered mind, of what, then, is an empty desk a sign?*

—Suzy



Left, Kelda Martensen, *Everything we built was made of dirt*, (2015)

NWCS SUMMER SHOW ■ July 20–August 26, 2016

BLACK and WHITE with a Splash of RED

The Northwest Collage Society's Summer Show will feature original collaged works of art at the Phinney Center Gallery in Seattle.

Kelda Martensen is our juror. She is a print, paper, book and collage artist, and extends her studio practice to murals and public art projects. Martensen is tenured faculty of art at North Seattle College where she serves as chair of the art department and teaches drawing, painting, printmaking, design and mural art. She has written arts curriculum for regional and national organizations. Both her students and her deep interest in arts education continue to inspire her studio practice.

Martensen earned a BA in Studio Art with honors from Willamette University, and a MFA in Visual Art with honors from The Sam Fox School of Art and Design at Washington University, St. Louis. Course work, grants, projects and residencies have taken her to Ireland, South Africa, Japan, France and Germany. She now teaches and maintains her studio in Seattle, where she resides with her husband, two year old daughter and ten year old dog.

Kelda Martensen's works aim to communicate the unresolved and to illuminate the poetics of home and displacement, as she explores storytelling through her collage of printed and drawn material.

www.keldamartensen.com

(continued on page 2)



February General Meeting Notes

—by Carole Carroll

Suzy Kueckelhan called the meeting to order, and urged all members to see our excellent show at the WA State Convention Center in Seattle.

Anne LaFever welcomed several guests and introduced 4 new members: **Sue Gilbert, Susan Lindsay, Eva Kozun and Sachiko Kusachi.**

Lorie Hoffman, Executive Director of the Shoreline/ Lake Forest Park Arts Council, attended the meeting. Anne circulated the current member roster for corrections and thanked Judith Noble for her help.

Meg Gray gave the treasurer’s report.

Gail Larson, NCS representative, explained our affiliation with the National Collage Society. She announced the 2016 NCS shows and had brochures available with information about those shows.

John Arbuckle said he is working on the prospectus for the **2016 NWCS Summer Show** at Phinney Center Gallery. Artworks will be delivered directly to and picked up from the Center. The Juror is Kelda Martensen. The theme is “Black and White with a Splash of Red”. The Entry Thingy online system will be used for this show. John asked for another volunteer to assist him and Jan Clem with future shows.

Suzan Fant was thanked for her many years as programs coordinator. Programs have been excellent and membership has grown as a result. Suzan was gifted with an orchid plant.

Stacy Hamm said that this year’s registration for the retreat at Warm Beach was at 24, the minimum attendance required for the group. By member vote it was decided to carry over the \$800 deposit and continue planning for the retreat next year.

Betty Jensen won the collage by **Laura Downing.** The program about framing art was presented by **Kappy Trigg** of **Artech**, Seattle.

A Message from Wendy Lee Lynds...

Many thanks to all of you who kindly gave your honest feedback in the 2016 NWCS Survey distributed at the February meeting. This tallying up of what you felt the society did well and what we can do better is invaluable in making this group of fabulously talented artists the best it can be. We sincerely appreciate your input!

Wendy Lee

New Members

- Sue Gilbert, Bellevue
- Eva Kozun, Sequim
- Bonnie Kuhn, Seattle
- Sachiko Kusachi, Seattle
- Susan M Lindsay, Mukilteo

(continued from page 1)

BLACK and WHITE with a Splash of RED

All details for this show can be found in the prospectus online, and members may access it through the EntryThingy link on the website: [NWCS Summer Show](#)

The artwork must adhere to the theme of three colors. Gray is allowed as a shade of black, but the use of pinks or oranges is not allowed and will disqualify the artwork. RED means only RED, and there are many shades of red! One example online is: [Color chart RED](#)

red	cherry	rose	jam
merlot	garnet	crimson	ruby
scarlet	wine	brick	apple
mahogany	blood	sangria	berry
currant	blush	candy	lipstick

Important Dates:

- **June 7, 2016** ONLINE ENTRY SUBMISSION DEADLINE
- **June 19** Notification of acceptance
- **July 18** DELIVER accepted artwork: 9 am–1 pm to the [Phinney Center Gallery](#)
- **July 20** NWCS Summer Show opens
- **July 22** Reception and Awards, 7 pm at Phinney Center Gallery, 6532 Phinney Ave N, Seattle
- **August 26** Show closes
- **August 26** PICK UP ARTWORK: Friday, 5–9 pm at the Phinney Center Gallery

It is not because things are difficult that we do not dare; it is because we do not dare that they are difficult.

—Seneca



April 2016 Program: Jackie VanNoy, *New Possibilities*

In recent years, I have frequently turned to collage as a transition tool from one body of work to another. I find this a valuable and much needed time spent reflecting on work just done, and it enables me to sort through all the leftovers from my paintings, which don't all make it for one reason or another. I will share with you some simple and fun ideas I have been using to help ease the clean up process from the completed work, and possibly discover fresh ideas for what is to come next!



(Images © Jackie VanNoy)

Jackie VanNoy is a full time painter whose curiosity and love of learning have led her to workshops with many well-respected creative instructors for over 30 years. She uses traditional and experimental expression in her work, as a means of fully exploring her subject matter. Both a painter and calligrapher, Jackie is a juried member of Women Painters of

Washington, Northwest Watercolor Society, and Seattle Co-Arts. She is also active in Write-On Calligraphers in Edmonds, WA. Jackie's work can be seen at www.jackievannoy.com

February 2016 Program — Kappy Trigg

Our guest speaker, Katherine "Kappy" Trigg, works at Artech, a fine art service company that provides framing, transportation, and installation of fine art works. Kappy spoke primarily about framing and protecting artwork, with an emphasis on works on paper, and the ways to properly frame them. She emphasized archival or conservation framing, which will protect artworks from light, from impact damage, and will enhance the artwork for personal display or to meet gallery requirements. More Plexiglas is being used in framing, since it is lightweight and recyclable. While using quality, non acidic materials may be expensive, it is worth the expense because it will prevent damage to the artwork that can be caused using inferior materials. Kappy shared some of her mixed media works, while explaining her framing methods. Her website is kathryntrigg.com.



Volunteers Needed!

The Northwest Collage Society currently needs more volunteers!

We need more people to help with coffee and treats for General Meetings: Contact, Gail Larson glarson456@gmail.com

We need more help with juried shows and receptions: Contact, John Arbuckle
Jan Clem
shows@nwcollagesociety.org

MEMBERS' CHOICE CHALLENGE

\$25.00 Cash Award

April 16, 2016 Saturday NWCS Meeting

"SPRING FORWARD"

Think SPRING, think SPRINGS, think FORWARD —whatever that might bring to mind.

- Parameters: 4"x6" collage mounted on 8"x10" white 4ply mat board
- Unsigned on front of collage
- Signed on back of mat board
- Attention given to overall good design
- Cohesiveness – Focus – Imagery
- Correlation of lights and darks



Member News



Laura Yager

Laura Yager won the Best in Show award in the exhibit *A Dog's Life* at the Ciel Gallery, Charlotte, NC. She will have two collages published in North Light Book's upcoming *INCITE 4: The Best Of Mixed Media*; one of her collages has been featured on *Kolaj* magazine's Facebook page.

Gay Jensen and four other members were accepted into the 20th Juried Art Show at Schack Art Center, Everett, Mar 10– Apr 23. Six NWCS members are included in this show: **Molly LeMaster, Donna Jean Perry, Chris Romine, Evelyn Sheffer, and Jan Tervonen.**



Gay Jensen

Susan Lehman and **Pat Snyder** (Coos Bay and Bandon, OR) are included in the on-line International Collage Exchange at <http://virtual.tart.co.nz/> for the month of April 2016. Additionally, Susan Lehman is included in the 2016 CoCA Members Show, March–April, and had a piece selected for the printed catalogue. And Pat Snyder has a one-person exhibit of his work at the Art by the Sea Gallery in Bandon, OR, for March–April 2016.



Donna Jean Perry



Chris Romine



Susan Lehman



Pat Snyder



Robert Stockton



Elizabeth Halfacre



Caitlin Dundon

Elizabeth Halfacre has a mixed media collage in the "2016 Kirkland Arts Center Artists' Exhibition", Apr 2–Jun 11, 2016. Reception: Friday, Apr 1, 6 pm. kirklandartscenter.org

Lu McBride, Kathy Parker, and Robert Stockton have artwork in the collage exhibition "People, Places, and Things", Mar 16–Apr 26, 2016, in the Daniel Smith Artist Materials Gallery at the Daniel Smith Seattle store. Additionally, Robert Parker has a mixed media piece included in the upcoming book, *Incite 4: Relax, Restore, Renew*, to be published by North Light Books in September 2016.

Caitlin Dundon will hold a Mixed Media Collage 1-Day Workshop, *Put a Bird on It*, at the Greenwood Senior Center, Saturday, April 23rd, 10:30 am–4:30 pm. Fee is \$99 & \$10 supplies. For more Info: oneheartstudio.com. She will also teach at the Art & Soul Mixed Media Retreat, May 23rd–29th, 2016, Minneapolis. For information: artandsoulretreat.com



2016 NCS Postcard Show

Quinlan Visual Arts Center
Gainesville, GA.
Entry Dates: April 4–8, 2016
Exhibit Dates:
April 14–June 4

32nd NCS Annual Juried Exhibit

Downtown Gallery, Kent State University
Kent, OH
Entry Deadline: July 15, 2016
Exhibit Dates:
September 29–October 29, 2016

Complete details, prospectus, and other information for both shows is available at the website: nationalcollage.com



The Northwest Collage Society Open Winter Show

The 2016 Northwest Collage Society Winter Show was held at the Washington State Convention Center, Seattle, Jan 16–Mar 26, 2016. Awards were presented on Feb 11th, at an unconventional and enjoyable ‘flash mob’ reception. On an uplifting note, juror Joan Stuart Ross was pleased with the variety and quality of the artwork, and all NWCS members who entered the show had at least one piece accepted!

2016 Winter Show NWCS Awards

- Northwest Collage Society Award, Leslee Currie, *Live in the Layers*
- Northwest Collage Society Winter Award, Janna Coker, *Sew*
- Eleanor Wolters Smith Memorial Award, Suzan Fant, *Dear Henri No. 2*
- Peggy Tuttle Memorial Award, Judith Becker, *Bateaux*
- Merit Award, Stella Gausman, *Progression*
- Merit Award, Sachiko Kusachi, *Composition No.1*
- Merit Award, Donna Jean Perry, *Night Patterns*
- Merit Award, Ilene Bernstein, *RPS*



Leslee Currie (NWCS)



Janna Coker



Judith Becker



Suzan Fant (NWCS)



Stella Gausman (NWCS)



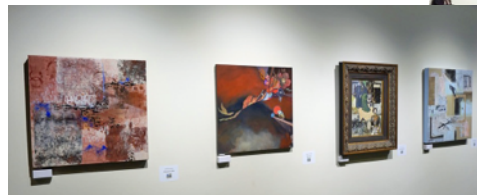
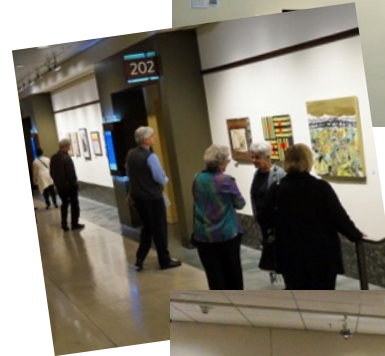
Sachiko Kusachi (NWCS)



Donna Jean Perry (NWCS)



Ilene Bernstein





Hannah Höch,
Untitled, 1930
Photomontage

MashUp: The Birth of Modern Culture

February 20–June 12, 2016
Vancouver Art Gallery, Vancouver, BC

SOMETHING HAPPENED 100 YEARS AGO THAT CHANGED THE WAY WE THINK ABOUT ART AND THE WAY WE SEE THE WORLD. THE LAST TIME THIS HAPPENED THEY CALLED IT THE RENAISSANCE, THIS TIME WE'VE CALLED IT MASHUP.

From the moment that Pablo Picasso and Georges Braque undertook the revolutionary gesture of adding a rectangle of floral wallpaper, a newspaper headline or a scrap of sheet music to their compositions, they initiated an immediate and fundamental shift in European art. Hannah Höch

The resulting explosion of mashup strategies employed across media and movements offers the clearest evidence of the relevance of this process to the growth of visual culture during the 20th century. From Marcel Duchamp to Jean-Luc Godard, Liz Magor to Isa Genzken, artists of diverse disciplines have adopted and reworked this creative strategy. Taking over all four floors of the Vancouver Art Gallery, this groundbreaking exhibition will offer an international survey of mashup culture, documenting the emergence and evolution of a mode of creativity that has grown to become the dominant form of cultural production in the early 21st century. Find more information at the website:

[Vancouver Art Gallery](http://www.vancouverartgallery.com)

Calls for Artists

[Upstream Gallery](http://www.upstreamgallery.com) announces its fourth juried works-on-paper exhibit, *Paper Works 2016*.
Deadline: May 28. [Prospectus](http://www.prospectus.com).

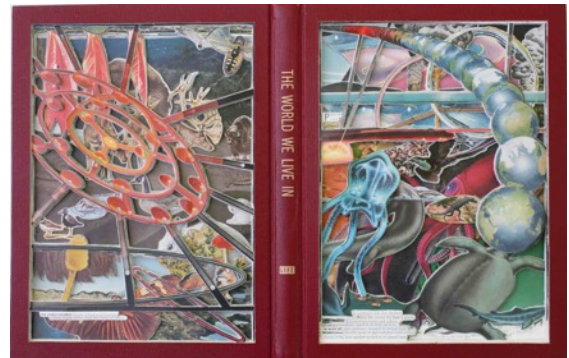
Olympic Peninsula Art Association announces its Annual Juried Show 2016, May 27–June 26. For info and prospectus: [sequimarts.org](http://www.sequimarts.org)

10x10x10xTieton 2016, Tieton WA. Annual call for art. Deadline: June 16. [Tieton Arts](http://www.tietonarts.com)

A variety of calls, regional and national may be found on both these websites:

CaFE™ : [callforentry.org/](http://www.callforentry.org/)
Artist Trust: [artisttrust.org](http://www.artisttrust.org)

James Allen: *Anesidora*
Kittredge Gallery, University of Puget Sound
Through April 16, 2016



James Allen, *The World We Live In*

James Allen creates unique book excavations that transform books into sculptures filled with word and image-rich pieces. He starts with a discarded vintage book, then cuts carefully through layers of illustrations and images to create a multi-faceted display. He combines words and images to allow a story to emerge from inside the book.

To see a video from Oregon Public Broadcasting: [OPB Artbeat](http://www.opb.org) For more images, visit the artist's website: [jamesallenstudio.com](http://www.jamesallenstudio.com)



NWCS Annual Retreat 2016

The NWCS Annual Retreat 2016 was held at the Warm Beach Conference Center, near Stanwood, WA, February 26–28. Agreeing that we weren't there for the "camp style" meals, nonetheless a good time was had by all! As always, sharing of supplies and demos of collage techniques were the highlights of the weekend. We have already secured the Maple Room for next year, thanks to **Stacy Hamm** who will continue as our contact: hammstacy@gmail.com. Thanks to Gina Hanzsek, who is always ready with her camera, for the fun photos!



Janthina DuSavage (1946–2015)

Former NWCS member Janthina DuSavage, who passed away in December 2015, was remembered at the 2016 NWCS retreat. She had attended the retreat for three years, and enjoyed the camaraderie of making art with the NWCS group.

Janthina was a contributing artist at Collective Visions Gallery (CVG) in Bremerton for 21 years, and one of her large artworks hangs in lobby of the Norm Dicks Government Center. She traveled much of her life, and lived in many different locations.

Janthina worked as a curator at the Bernice Pauahi Bishop Museum in Honolulu, HI, and also also managed the Native American Center there. In Seattle, she was the manager of education and exhibits at the Seattle Aquarium for several years.

A Memorial was held on March 12th, at CVG, where Janthina's artworks are displayed through the month of March.





2015-2016 Northwest Collage Society Officers

Regional Rep	Gail Larson	glarson456@gmail.com
President	Suzy Kueckelhan	NWCSpresident@nwcollagesociety.org
Treasurer	Meg Gray	treasurer@nwcollagesociety.org
Secretary	Carole Carroll	secretary@nwcollagesociety.org
Membership	Anne La Fever	members@nwcollagesociety.org
Shows	John Arbuckle	shows@nwcollagesociety.org
Shows	Jan Clem	shows@nwcollagesociety.org
Programs	Wendy Lee Lynds	programs@nwcollagesociety.org
Newsletter	Liz Simpson	info@nwcollagesociety.org
Webmaster	Gina Hanzsek	info@nwcollagesociety.org
Member-at-large	Kathy Parker	kparkerncs@earthlink.net

The **Northwest Collage Society** is an affiliate of the National Collage Society. NWCS was established in 1984 as a non-profit organization, to advance the stature of collage as a major art medium.

Collage: An artistic composition made of various materials (as paper, cloth, or wood) glued onto a surface.

National Collage Society
President Gretchen Birnbaum, NCS
 254 West Streetsboro St.
 Hudson, OH 44236
www.nationalcollage.com

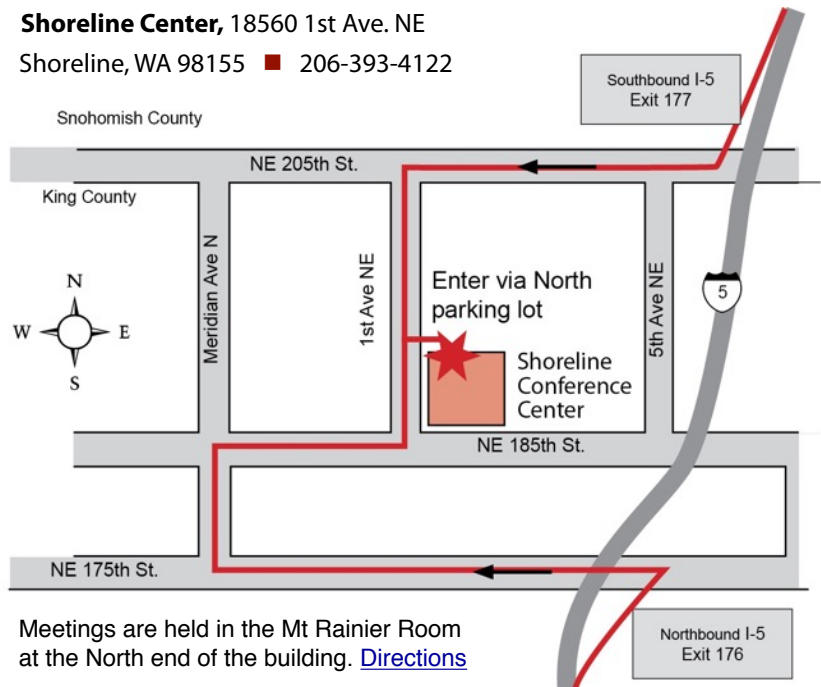
NWCS Meetings 2015-2016
www.nwcollagesociety.org

- Sat, Sept 19, 10:30 am-General**
Oct 20–Board
- Tues, Nov 17, 10:30 am-General**
Jan 19–Board
- Tues, Feb 16, 10:30 am-General**
Mar 15–Board
- Sat, Apr 16, 10:30 am-General**
May 17–Board
- Tues, Jun 21, 10:30 am-General**
Summer Break

Information for the **NWCS Newsletter** may be submitted to the Newsletter Editor: Liz Simpson: info@nwcollagesociety.org
 Deadlines for submission are the dates of Board meetings above.

Information for the **NWCS Website** may be submitted to the Webmaster: Gina Hanzsek: info@nwcollagesociety.org

Shoreline Center, 18560 1st Ave. NE
 Shoreline, WA 98155 ■ 206-393-4122



Meetings are held in the Mt Rainier Room at the North end of the building. [Directions](#)



Northwest Collage Society

If you need further information about the Northwest Collage Society you may contact: Suzy Kueckelhan, NCS, 206-842-3395, suzyku@msn.com or visit our website at www.nwcollagesociety.org

Please type or print your name as you wish it to appear in the Membership Directory.

Make checks payable to **NWCS**. Membership dues are collected each **September**.

Associate Members \$40.00 per year

Mail to: Meg Gray
 NWCS Treasurer
 6104 Latona Ave NE
 Seattle, WA 98115

APPLICATION FOR MEMBERSHIP

Name: _____

Address: _____

City: _____ State: _____ Zip: _____

Phone: (____) _____ Website: _____

Email: _____

Newsletter is sent as a PDF via email